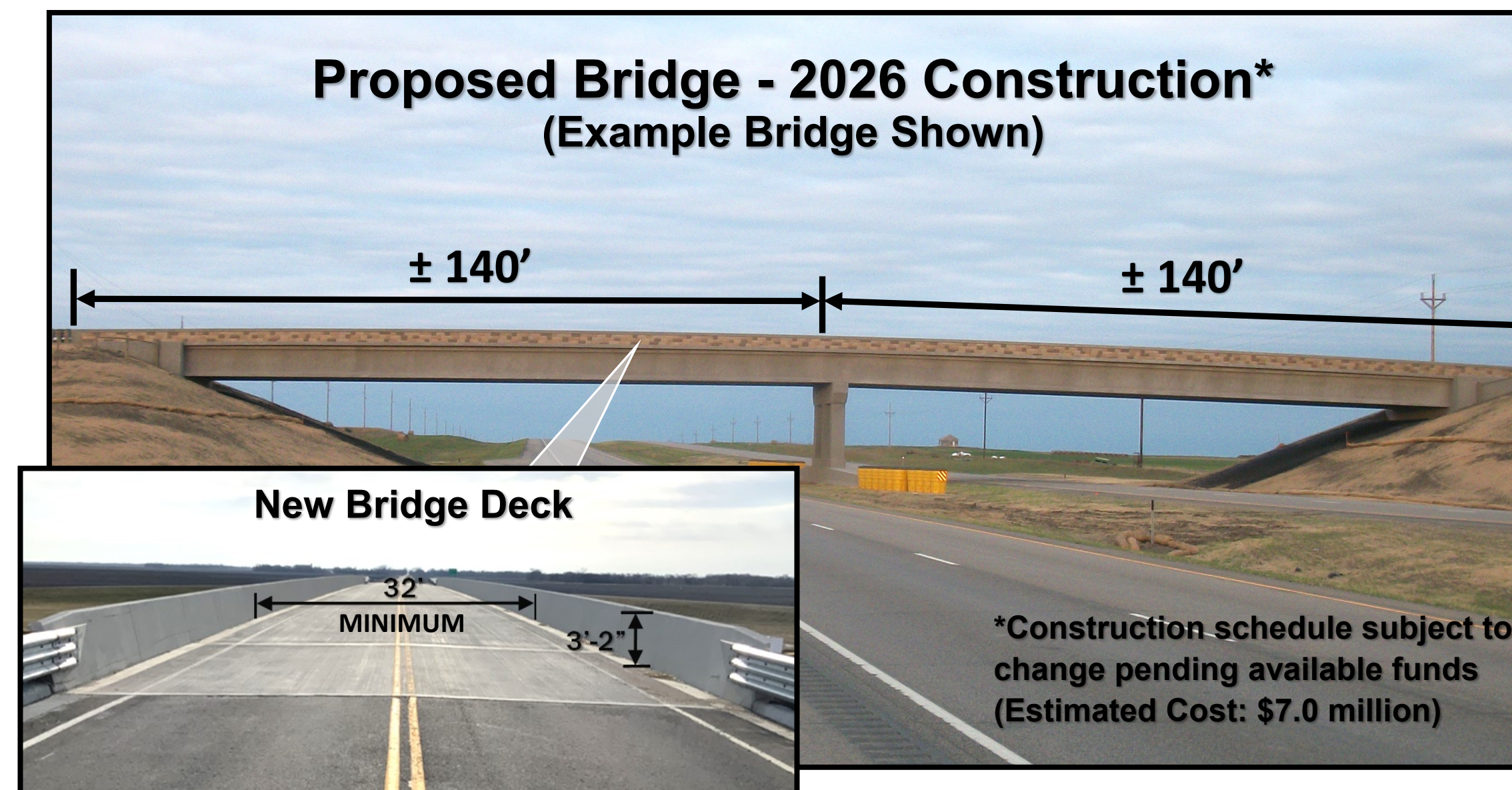
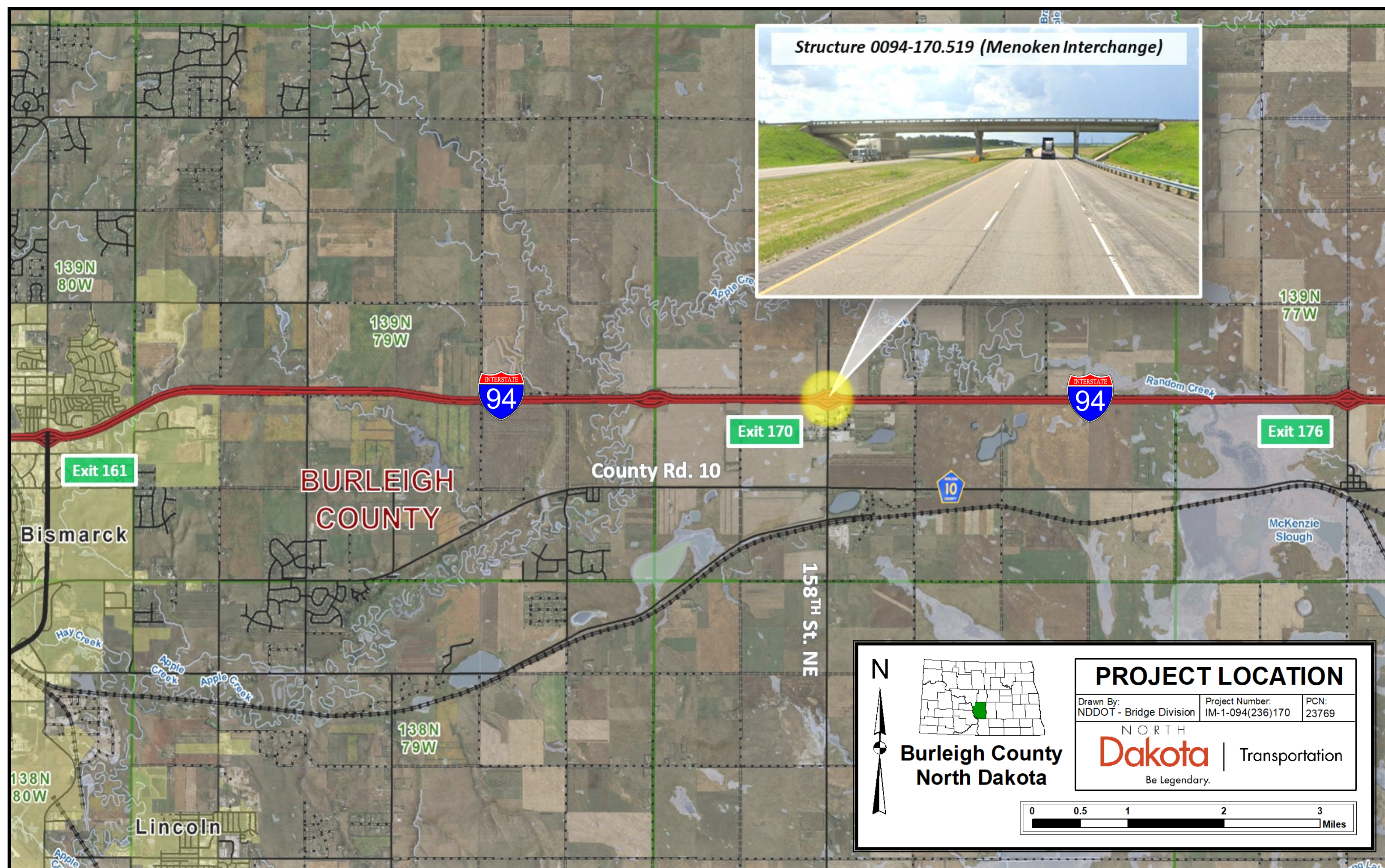
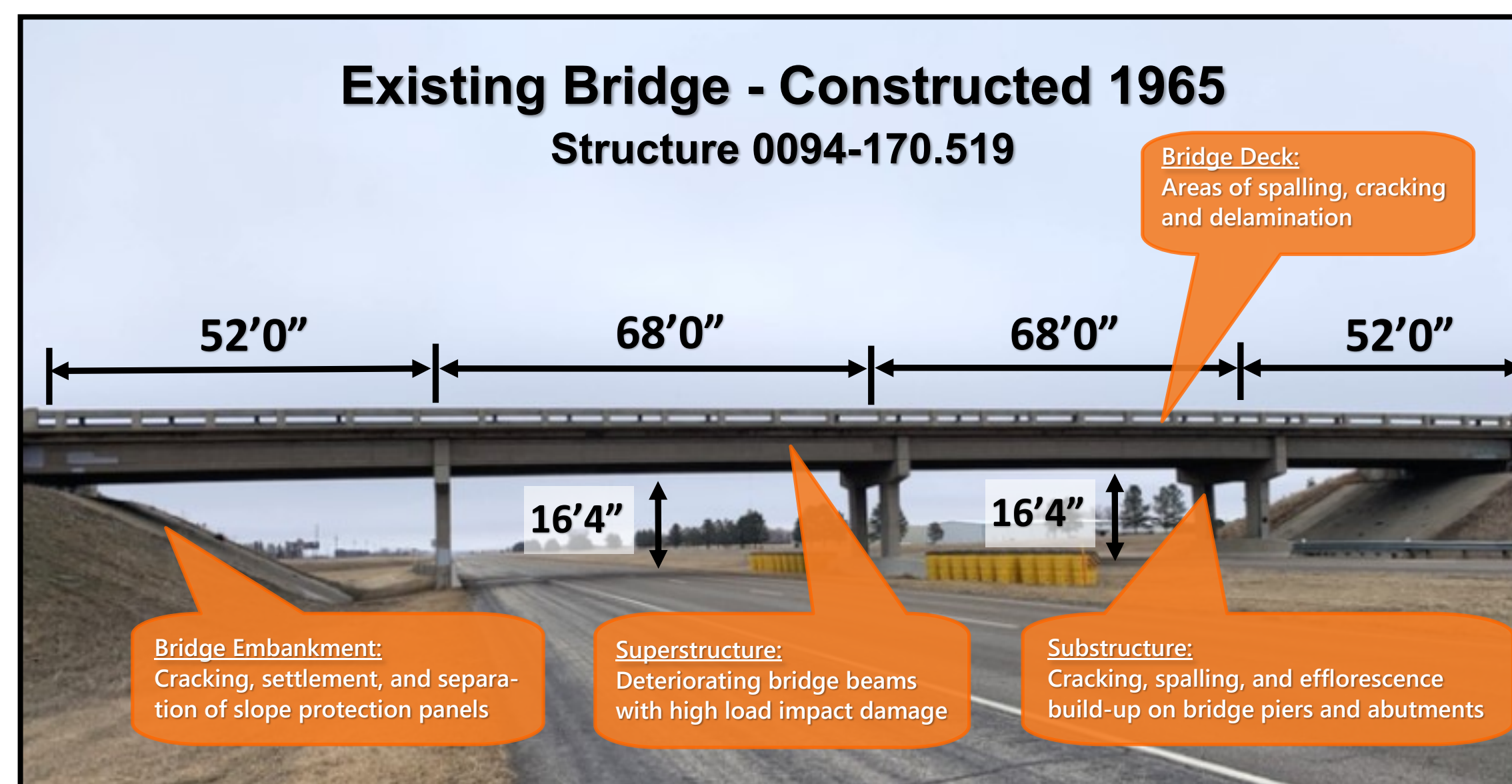


NORTH DAKOTA DEPARTMENT OF TRANSPORTATION PUBLIC INPUT MEETING - MENOKEN, ND



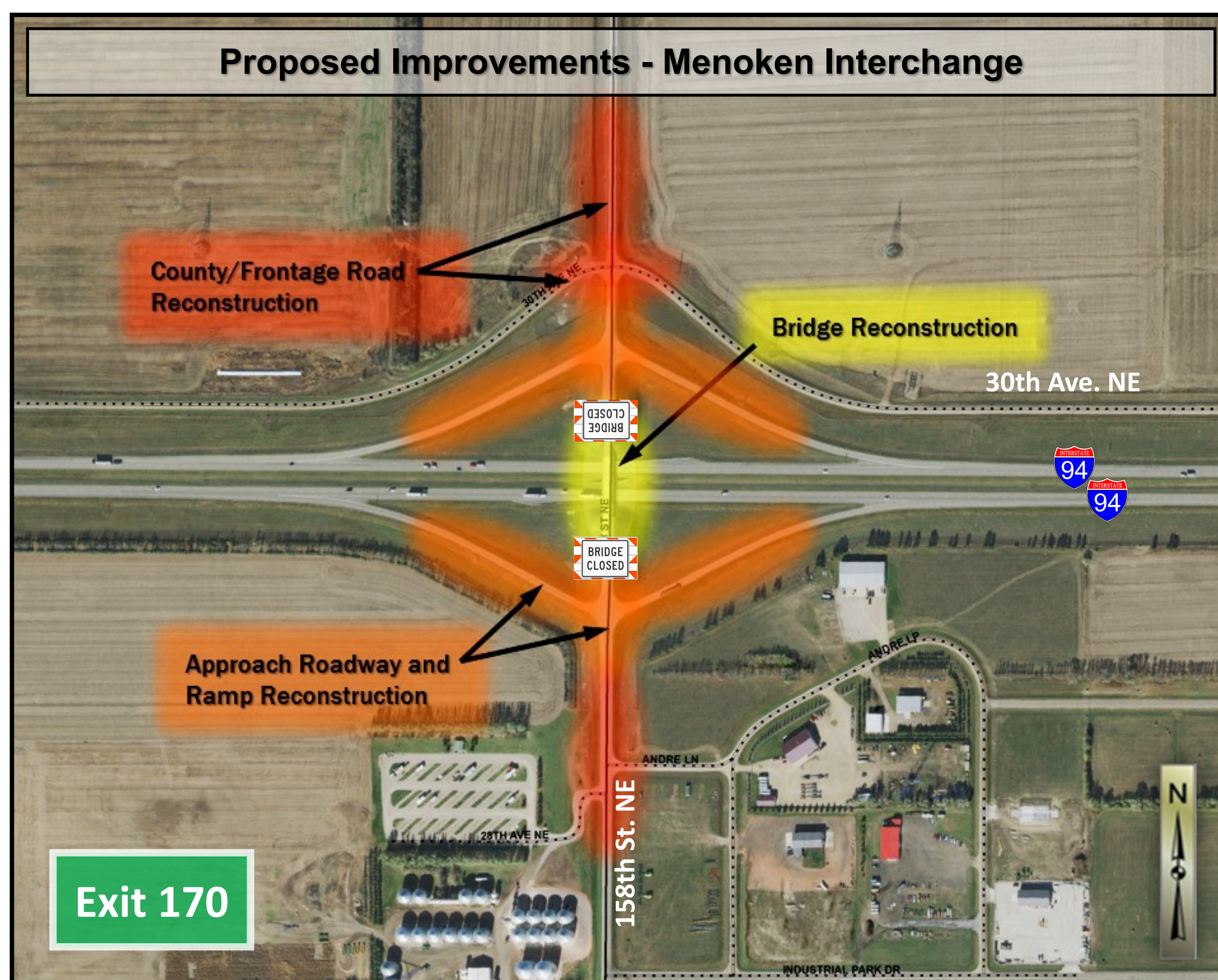
Proposed Bridge

- Spans = 2 (min.)
- Length = ± 280 ft.
- Width = 32 ft. min.
- Railing Height = 3'2"
- Vert. Clearance ~ 17' min. to 18'-4" max
- New slope protection
- New bridge will reduce maintenance and have improved design features



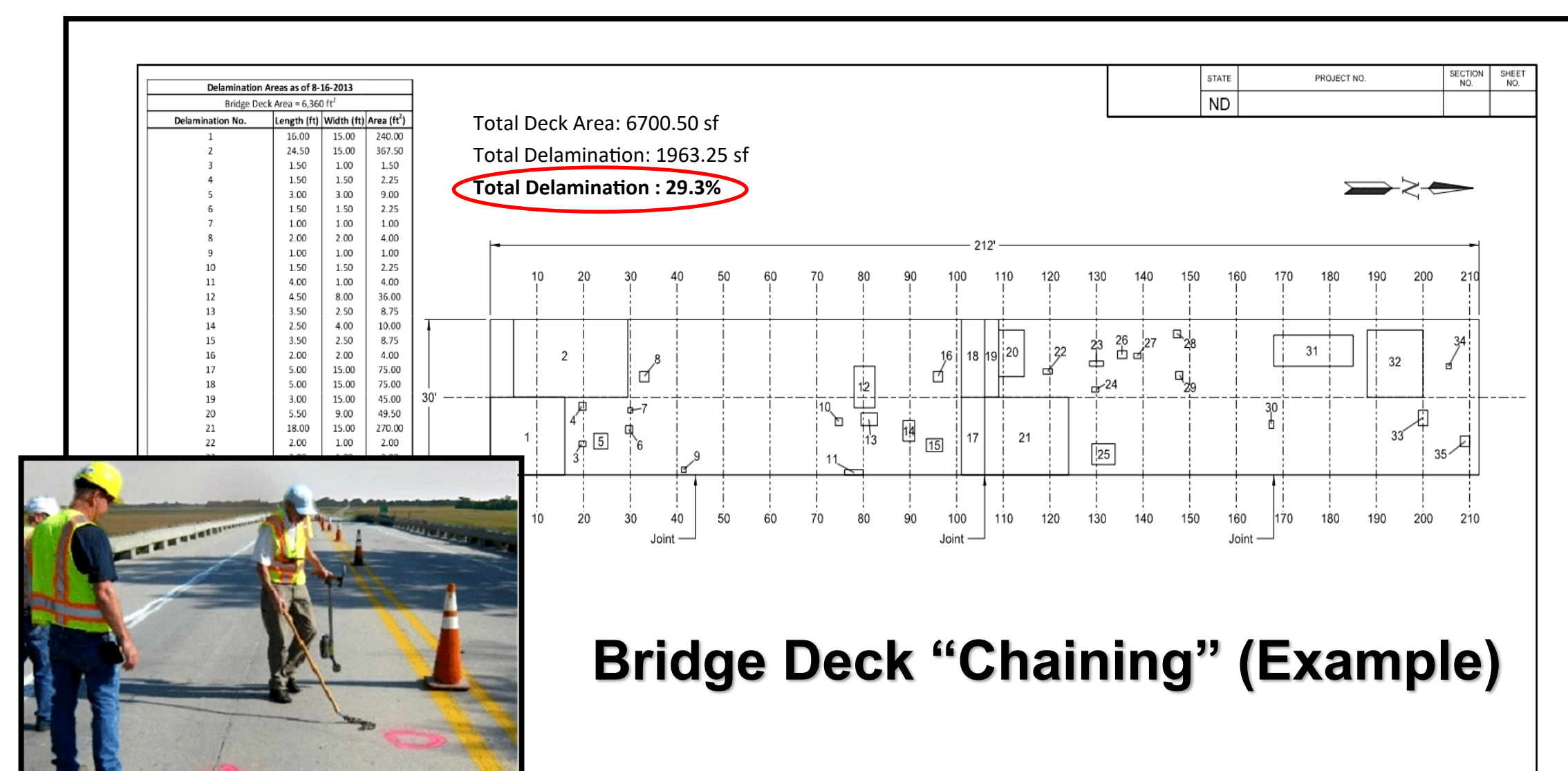
Existing Bridge

- Spans = 4
- Length = 240 ft.
- Width = 28 ft.
- Railing Height = 2'9"
- Vert. Clearance = 16'4"
- Deteriorating bridge components are requiring attention/maintenance



Project Phasing

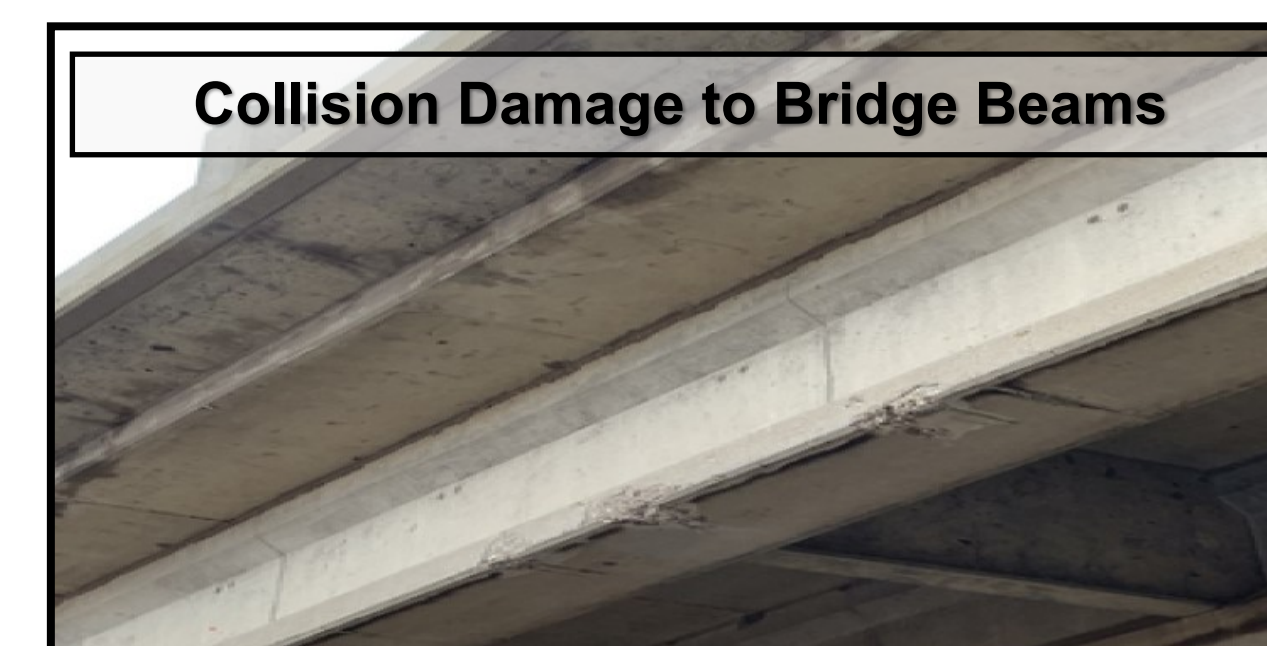
- 1) Close bridge and detour county/frontage road traffic as necessary
- 2) Remove existing bridge and construct new bridge
- 3) Reconstruct bridge approach roadway, interchange ramps, and county/frontage roads (roads will remain open to traffic)
- 4) Reopen bridge to traffic and complete project



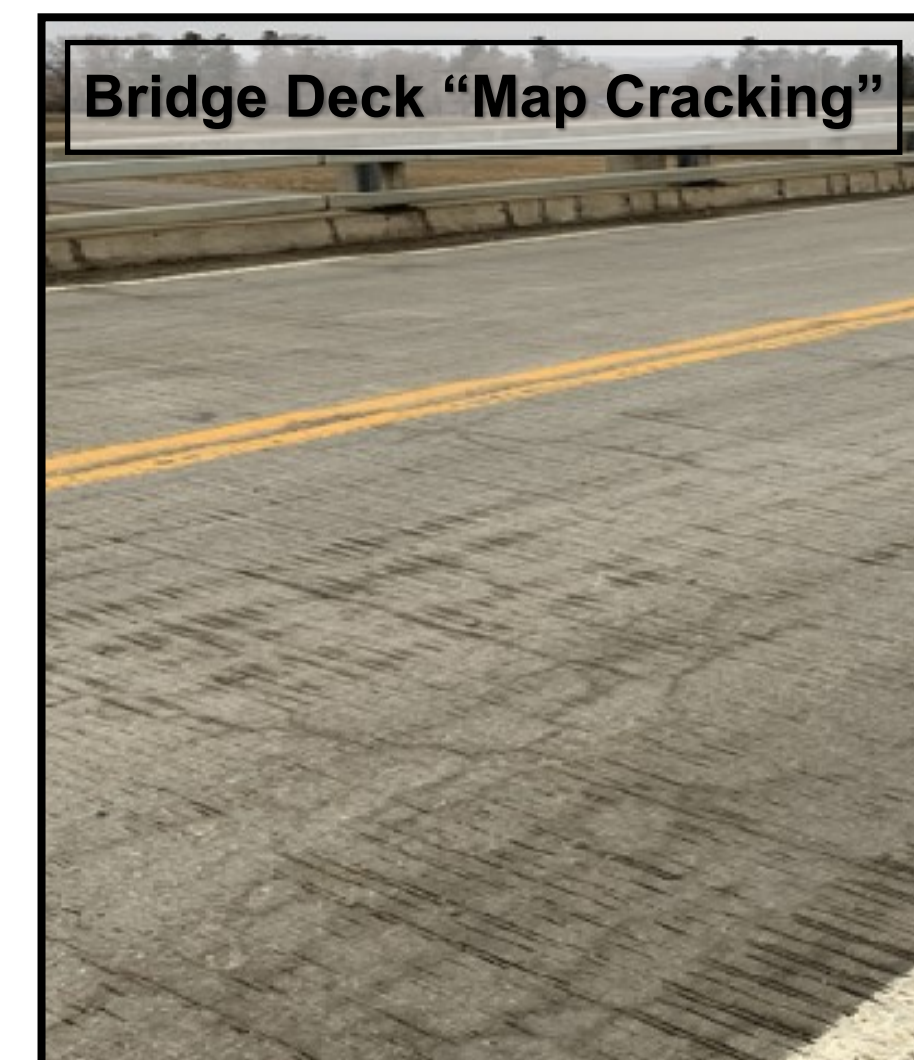
Bridge Deck "Chaining" (Example)

Bridge Delamination

- Concrete fractures within the bridge deck near reinforcing steel
- Bridge was "Chained" in 2021 and was found to be 29.3% delaminated



Collision Damage to Bridge Beams



Bridge Deck "Map Cracking"

EXHIBIT 1 PROJECT OVERVIEW I-94 MENOKEN INTERCHANGE BRIDGE REPLACEMENT