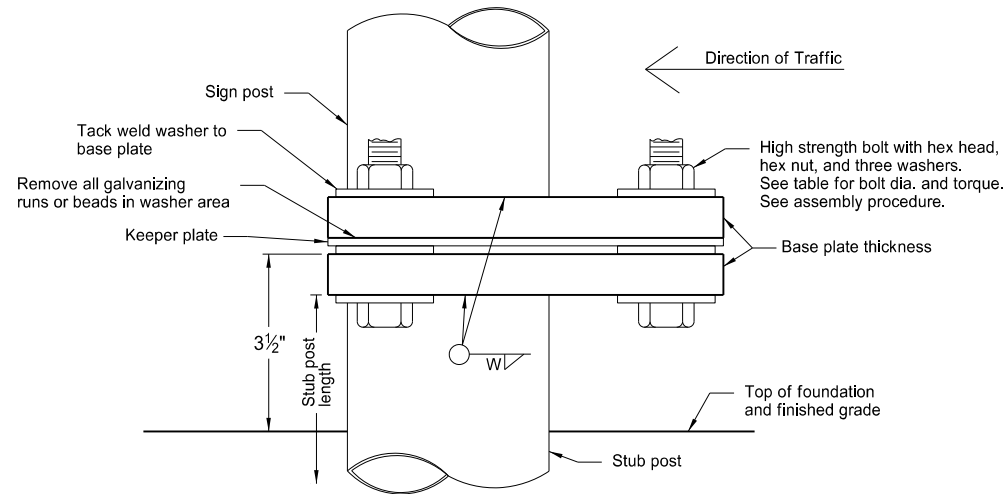
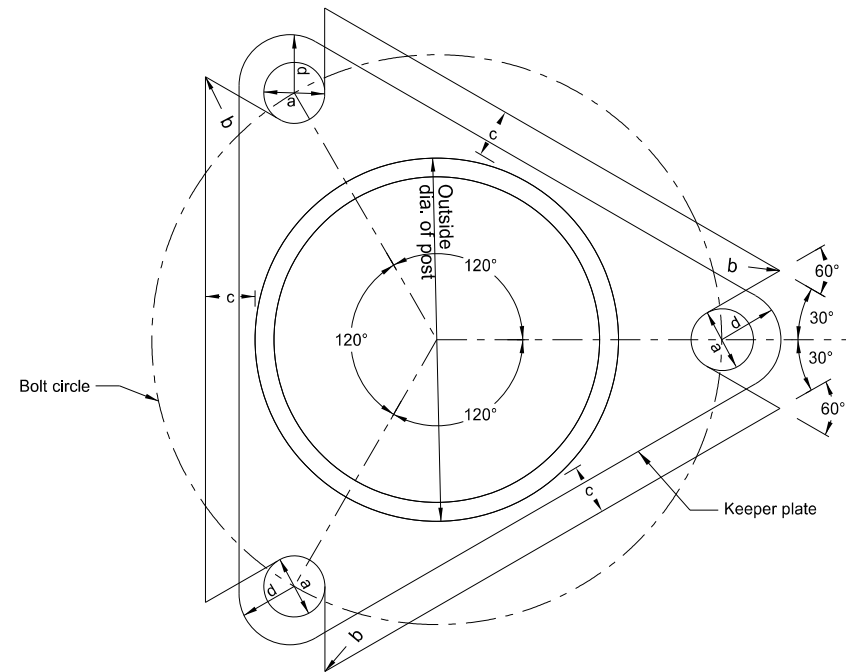


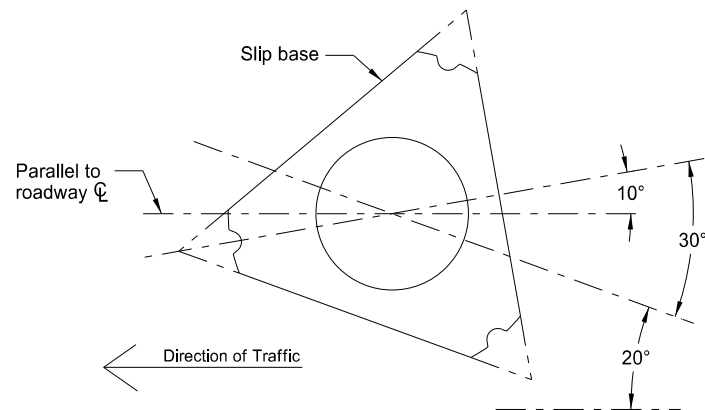
Multi-Directional Breakaway System for Standard Pipe Stub Post



Stub Post Connection - Type D
Elevation View
(Single Post)



Stub Post Detail
Top View



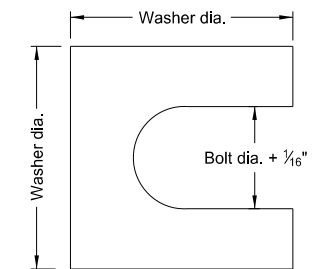
Slip Base Orientation
Top View

Notes:
Tack weld aluminum base plate washers to the base, when the base plate is fabricated from aluminum.

Use standard drawing D-754-6 for fuse plate, hinge plate, and foundation details.

Assembly Procedure:

1. Assemble post to stub with bolts and one flat washer between base plates and keeper plate.
2. Shim as required.
3. Tighten all bolts the maximum possible with 12" to 15" wrench to bed washers and shims to clean bolt threads, then loosen.
4. Retighten bolts in a systematic order to prescribed torque. (see table)
5. Loosen each bolt and apply thread locking liquid resin conforming to ASTM D5363-03 (2008). Fill gaps between thread and mating surface with thread locker to form solid, one part assemblies secure from vibration, pressure, and corrosion.
6. Retighten each bolt to prescribed torque in the same order as initial retightening.



Shim Detail

Furnish 2 each ±.012" thick and 2 each ±.032" thick shims per post. Fabricate shims from brass shim stock or strip conforming to ASTM B36.

Base Data Table											
Nominal Post Size dia.	Outside Post dia.	Bolt Circle	a rad.	b rad.	c rad.	Bolt Size (dia. x length)	Base Plate Thickness	W	Base Bolt Torque ft. lb.	d rad.	Stub Post Length
Steel											
3 1/2"	4"	7"	1 1/16"	1/8"	1 1/8"	1"x4"	1 1/4"	5/16"	55	1 1/8"	1'-6"
4"	4.5"	7 1/2"	1 1/16"	1/8"	1 1/8"	1"x4 1/2"	1 1/2"	3/8"	98	1 1/8"	1'-6"
5"	5.563"	9 1/2"	1 5/16"	1/8"	1 1/8"	1 1/4"x5"	1 1/2"	3/8"	167	1 3/8"	2'-0"
Aluminum											
3 1/2"	4"	7"	1 3/16"	1/8"	7/8"	3/4"x3 1/2"	1"	5/16"	43	7/8"	1'-6"
4"	4.5"	7 1/2"	1 3/16"	1/8"	3/4"	3/4"x4"	1 1/4"	5/16"	76	7/8"	1'-6"
5"	5.563"	9 1/2"	1 1/16"	1/8"	1 1/8"	1"x4"	1 1/4"	5/16"	98	1 1/8"	2'-0"
6"	6.625"	10 1/4"	1 1/16"	1/8"	3/4"	1"x4 1/2"	1 1/2"	3/8"	134	1 1/8"	2'-0"

NORTH DAKOTA DEPARTMENT OF TRANSPORTATION	
2-28-14	
REVISIONS	
DATE	CHANGE
8-30-18 8-29-19	Updated notes to active voice. New Design Engineer PE Stamp.

This document was originally issued and sealed by
Kirk J Hoff,
Registration Number
PE- 4683,
on 8/29/19 and the original document is stored at the North Dakota Department of Transportation