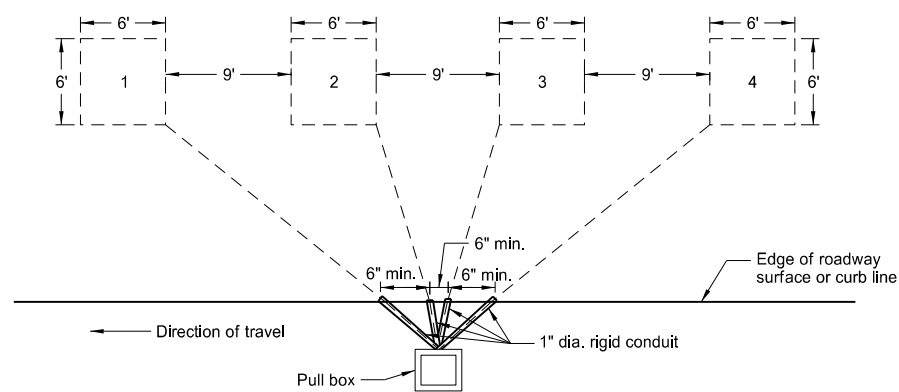
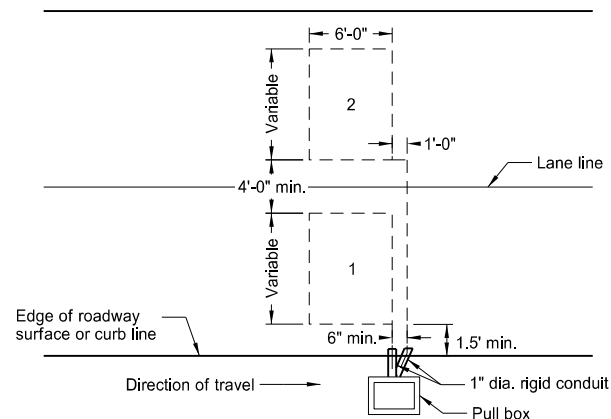


LOOP DETECTOR DETAILS (SAW SLOT)



Multiple Loop Details
(Presence Loops)



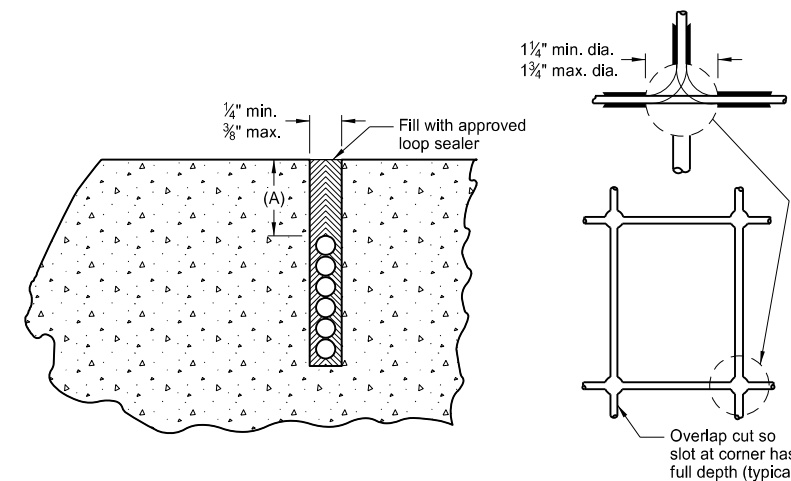
Loop Detector Detail
(Passage or Calling Loops)

Number of loops and number of turns as shown in the plans

Notes:

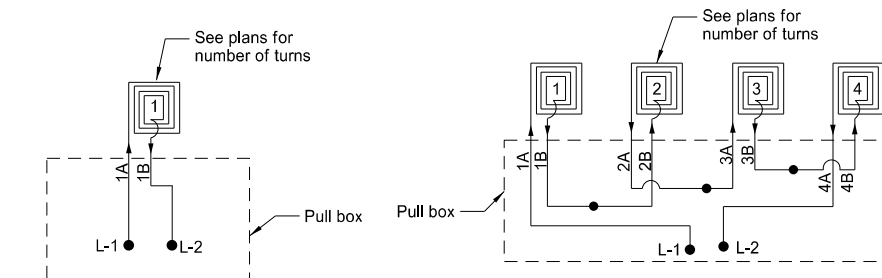
1. Saw cut each loop in roadway.
2. The number of turns, size of loop, and size of conductor shown on the plans.
3. Place leads from the loop to the pull box in saw slots and conduits to minimize interaction.

- (A) 1" minimum on concrete surface
2" minimum on asphalt surface



Saw Slot Details

Drill detector loop corners 2" deep then saw pavement slots to form loops. Dimensions and location shown in plans.

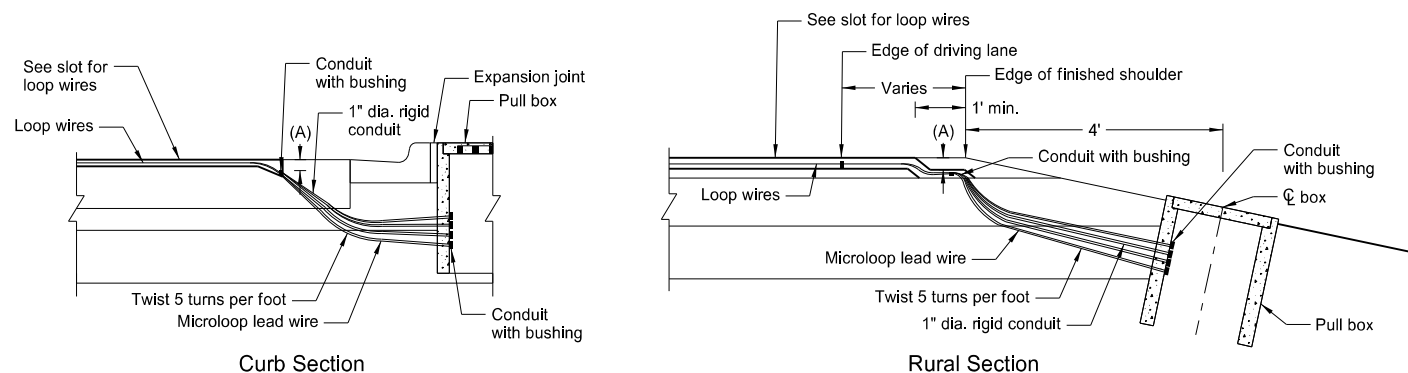


Single Loop Connection

Label all conductors in the pull box as shown. Splice loop connections in the pull box.

Multiple Loop Connection

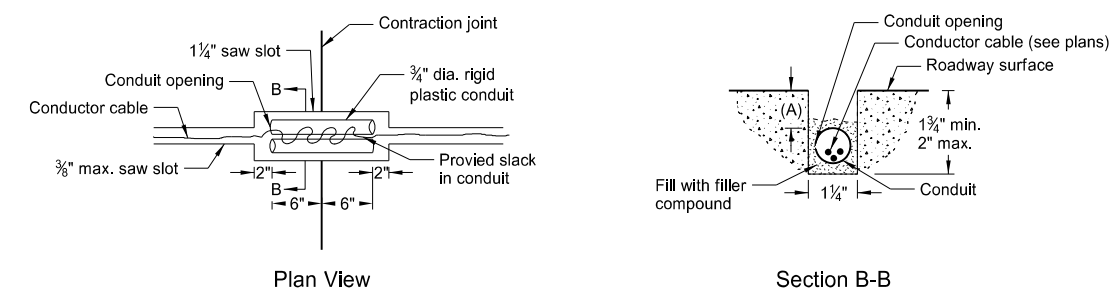
Where multiple loops are connected to create one detection zone, label all conductors in the pull box as shown and splice loop connections in the pull box as shown. Number of loops varies with connections made following the same pattern.



Curb Section

Rural Section

Saw Slot to Pull Box Details



Plan View

Section B-B

Construction Joint Detail

Use Construction Joint Detail when a crack in the roadway is encountered.

NORTH DAKOTA DEPARTMENT OF TRANSPORTATION	
11-14-13	
REVISIONS	
DATE	CHANGE
10-17-17 08-28-19	Updated to active voice. New Design Engineer PE Stamp.

This document was originally issued and sealed by
Kirk J Hoff,
Registration Number
PE- 4683,
on 8/28/19 and the original document is stored at the North Dakota Department of Transportation