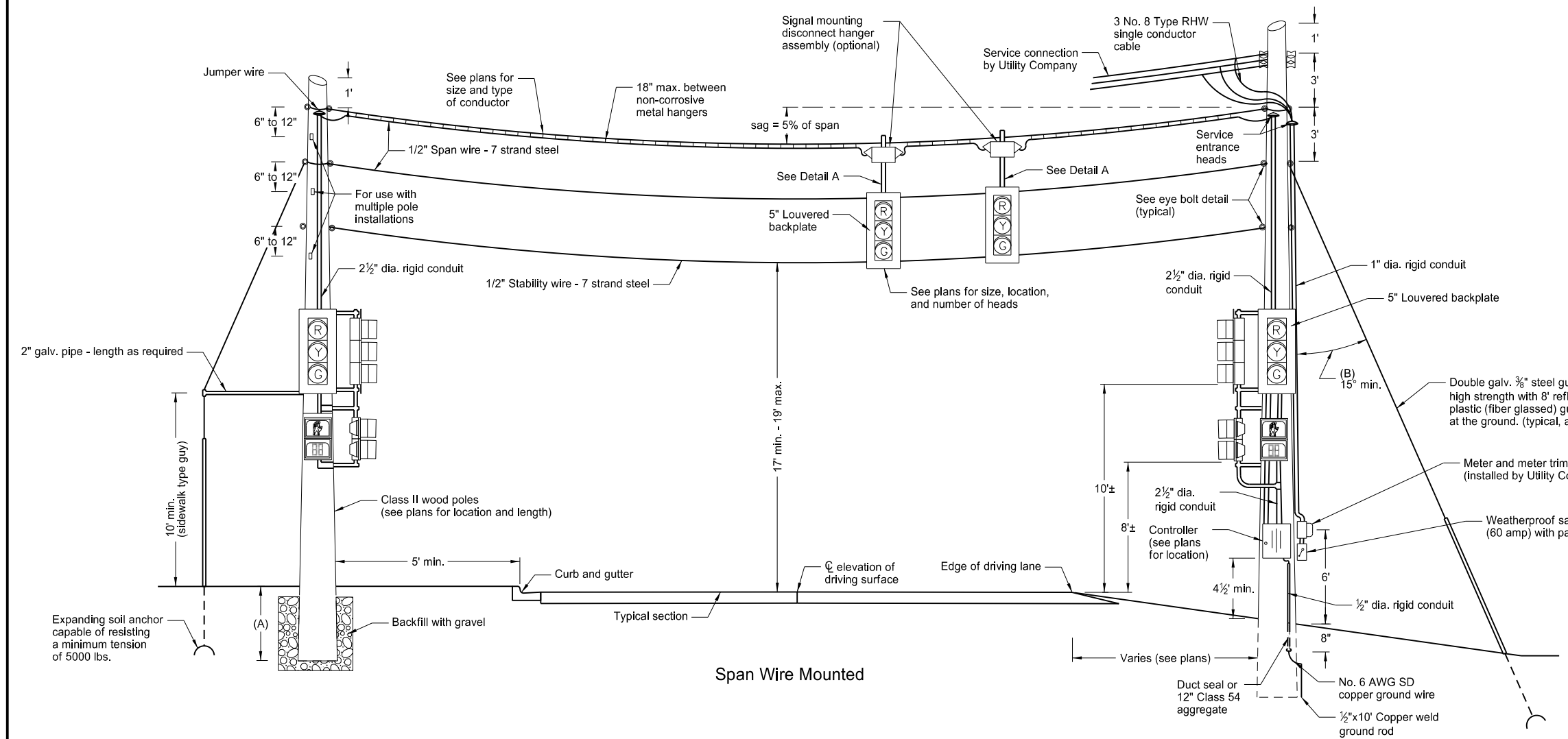


SPAN WIRE MOUNTED TRAFFIC SIGNALS

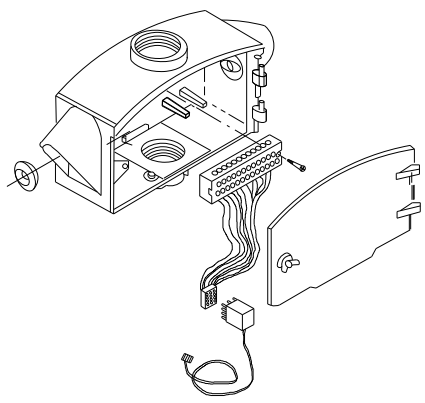


- Notes:
- Place span wired mounted traffic signals in accordance with Standard Specifications Section 772 and 896.
 - If a guy wire angle of less than 45° is used, increase the capability of the expanding soil anchor to resist tensions on site.
 - Maintain the required 17 to 19 ft. signal height over the roadway for a minimum period of 90 calendar days after installation, unless written permission is granted by the Engineer to waive the 90 day requirement. Include all costs to maintain the signal head elevation in the price bid for span wire mounted signals.
 - Operate traffic signal controller on 120 volts.
 - Use thimble type connections for span wire and stability wire.

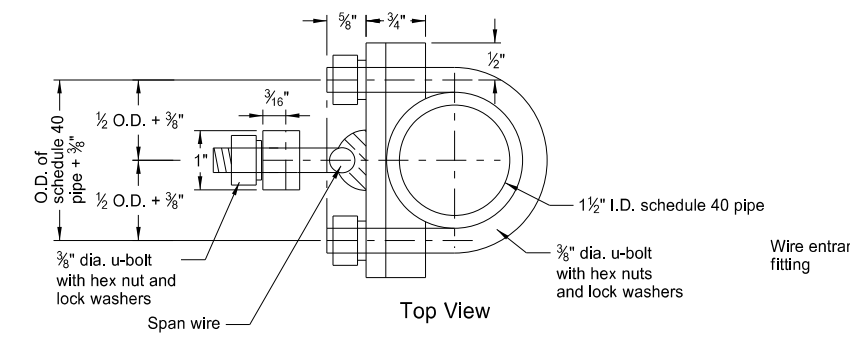
(A) Pole Depth of Setting	
Length of pole (ft)	Depth of pole min. (ft)
35	6
40	6
45	6.5
50	7
55	7.5

(B) Guy Wire	
Angle	Anchor Resistance min.
30°	12,000 lbs.
15°	24,500 lbs.

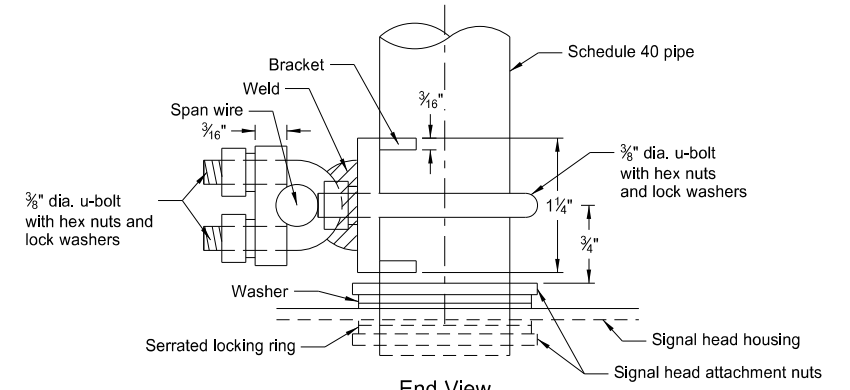
Span Wire Mounted



Signal Mounting Disconnect Hanger Assembly

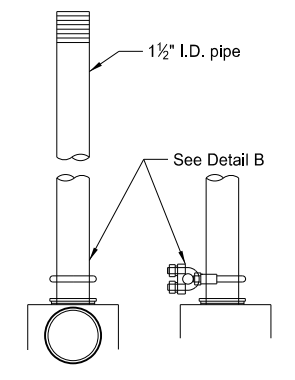
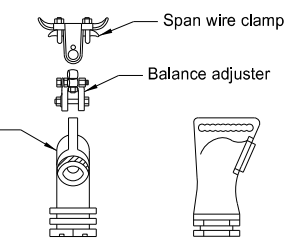


Top View

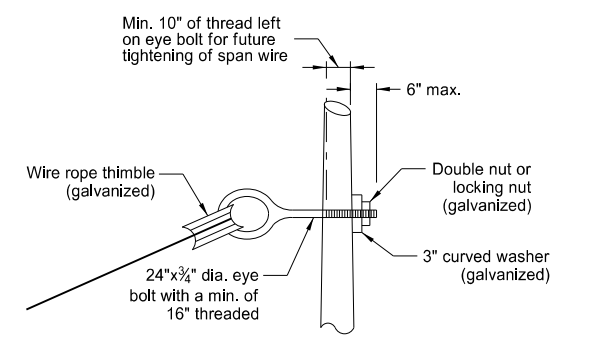


End View

Detail B



Detail A



Eye Bolt Detail

NORTH DAKOTA DEPARTMENT OF TRANSPORTATION	
2-28-14	
REVISIONS	
DATE	CHANGE
7-8-14	Title change, span wire size and sag
10-17-17	Updated to active voice.
8-28-19	New Design Engineer PE Stamp.

This document was originally issued and sealed by Kirk J Hoff, Registration Number PE-4683, on 8/28/19 and the original document is stored at the North Dakota Department of Transportation