



**ND DEPT OF TRANSPORTATION
SURVEYS & PHOTOGRAMMETRY**

TRAINING SUBJECT:

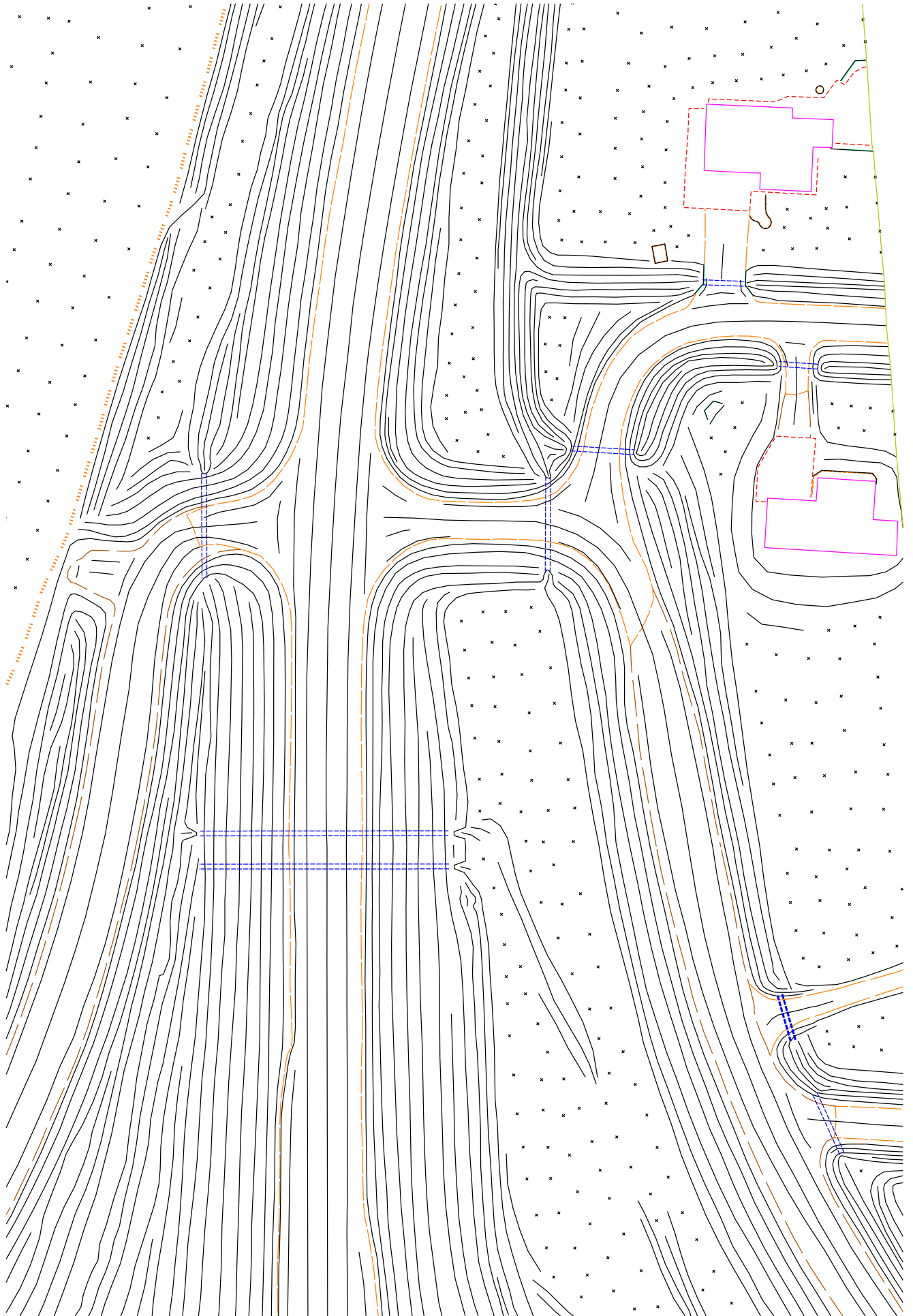
Appendix B

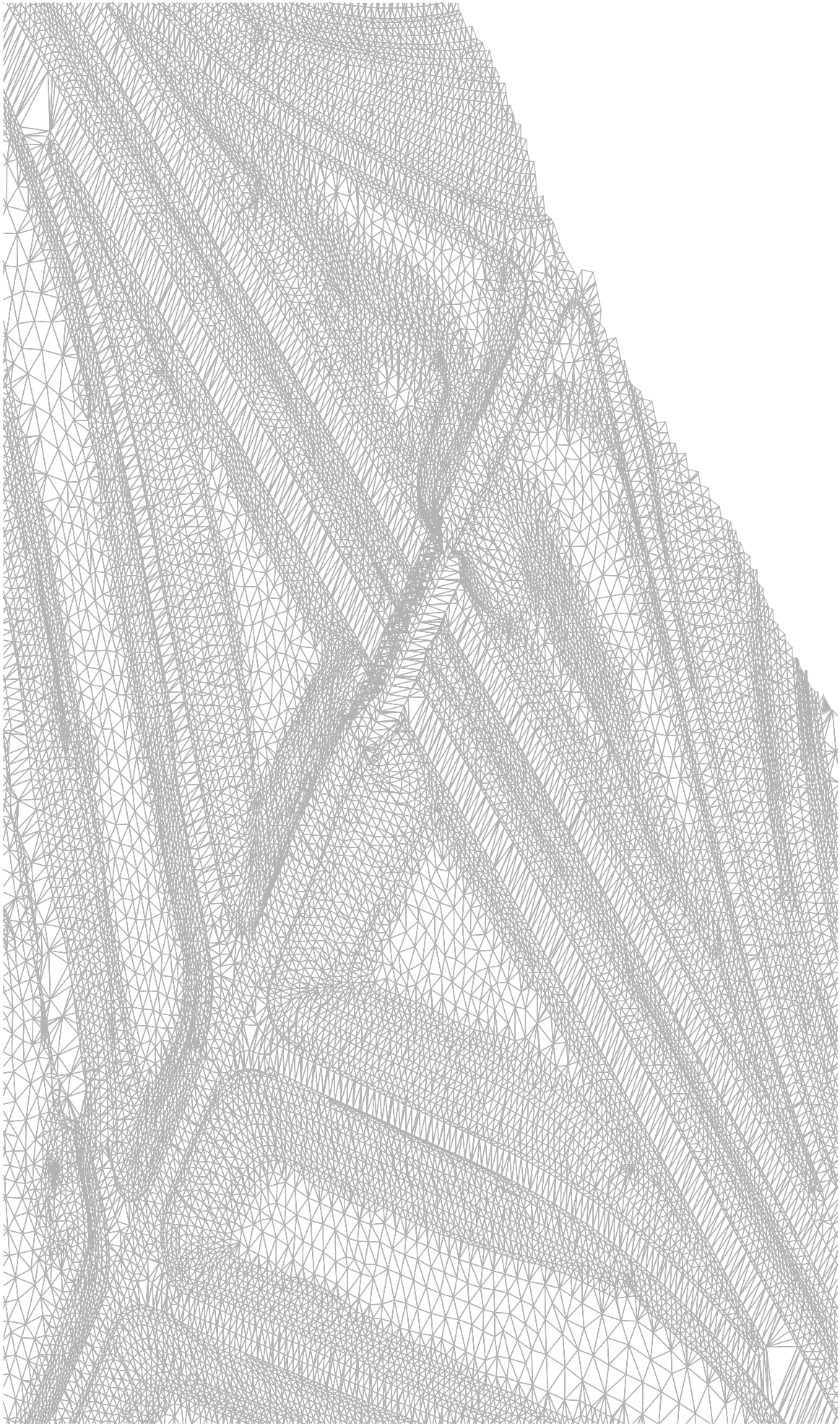
Photogrammetry and Data Collection Products.

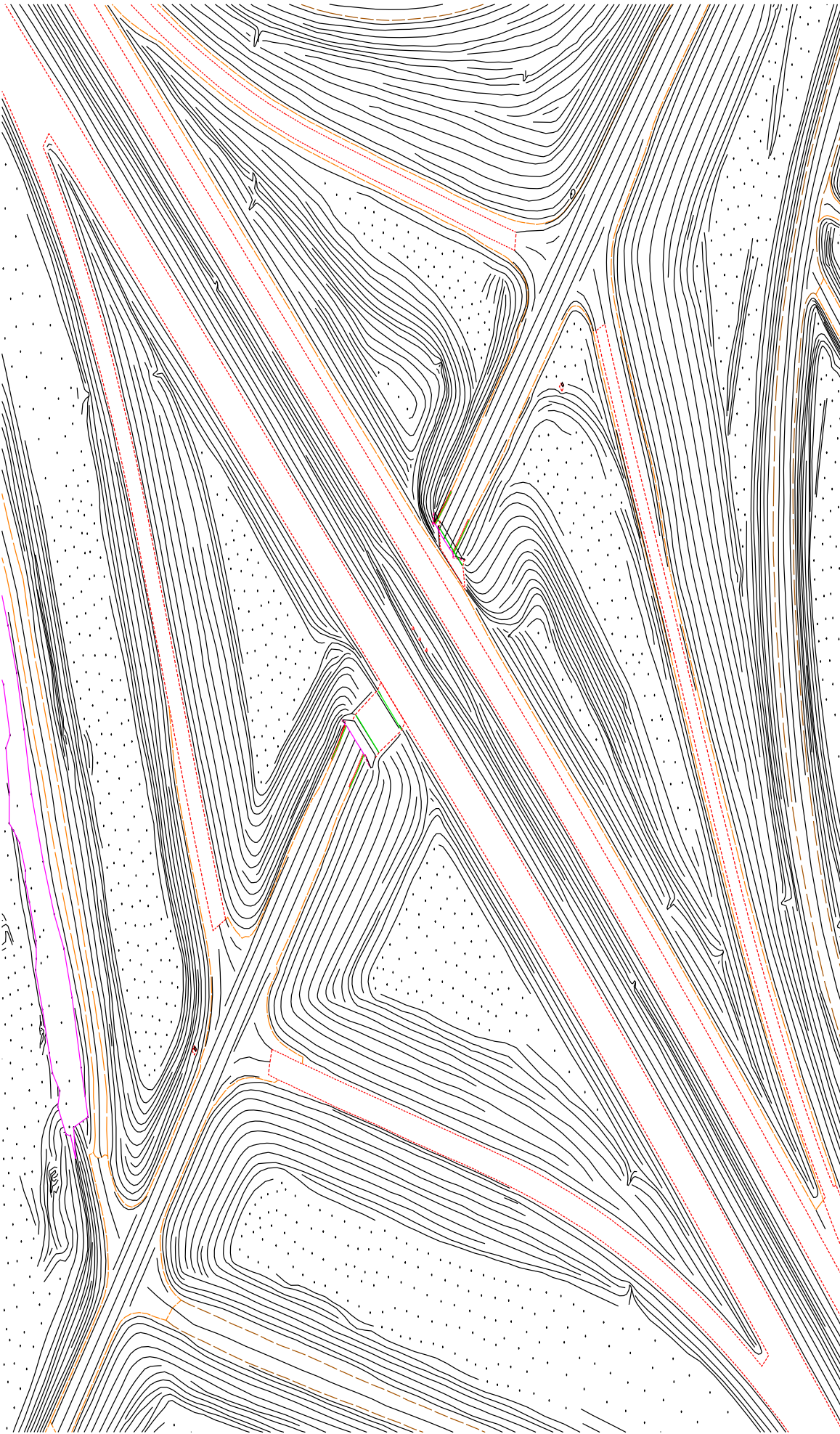
The following sheets are examples of :

1. Ortho Oblique
2. Culvert DTM Breaks
3. Triangulation
4. Breaklines and Spots
5. Rendering with Breaklines and Spots
6. Rendering with Road Surface
7. Comparison of Density between Field Data Collection and Stereo-Plotter
8. Field Data vs. Stereo-Plotter Cross Sections

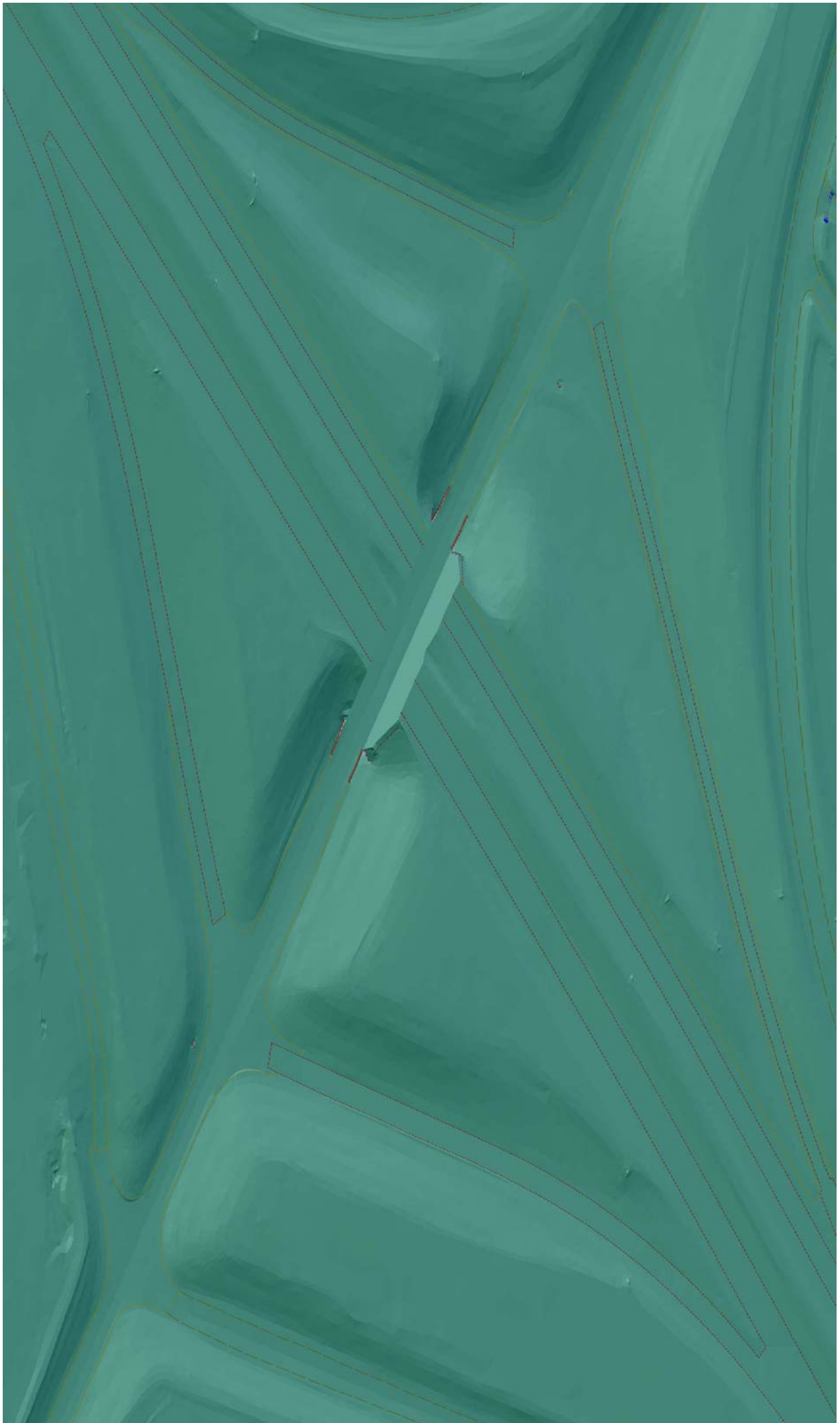


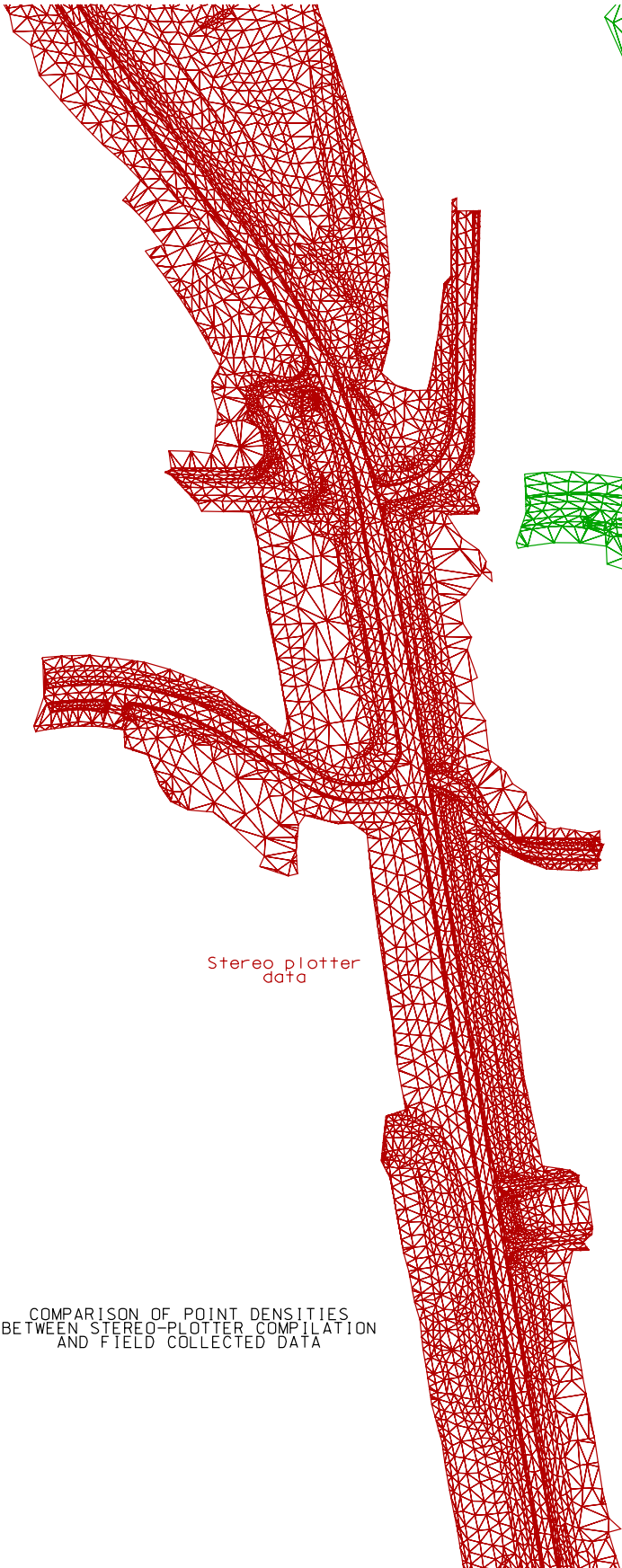




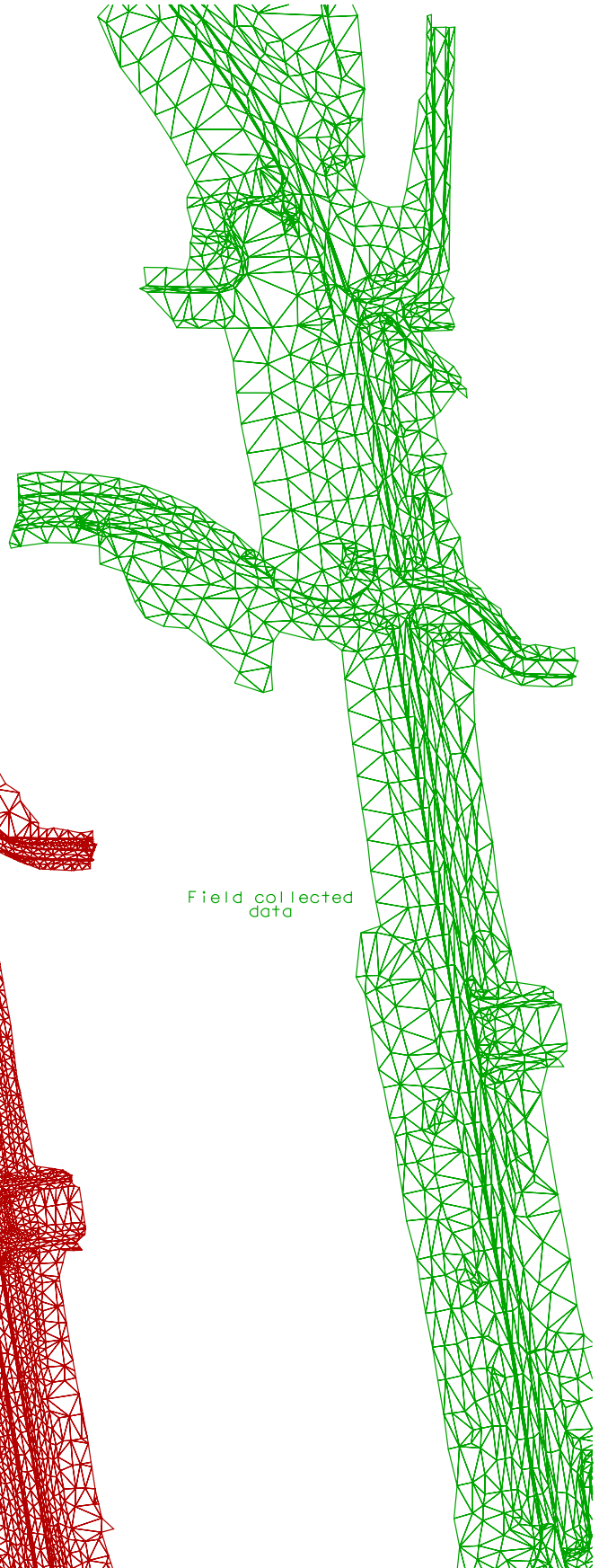








Stereo plotter
data



Field collected
data

COMPARISON OF POINT DENSITIES
BETWEEN STEREO-PLOTTER COMPILATION
AND FIELD COLLECTED DATA



Fewer shots taken in field collected data, result in "bridging" across undulations that stereo compilation is able to pick up. Earth volumes will be significantly affected.

Field to Stereo comparison
 field collected data
 Stereo plotter data

Actual cross section comparison taken from Mandan Main Street project. 10:1 vertical exaggeration.