

Welcome

---

# Memorial Highway Improvements

Public Input Meeting

July 30, 2019



NORTH  
**Dakota** | Transportation  
Be Legendary.™



# Project Overview



ADD SIDEWALKS  
OR TRAILS



IMPROVE TRAFFIC  
FLOW AND  
INTERSECTION  
SAFETY



IMPROVE  
DRAINAGE



PROVIDE SAFE  
ACCESS TO  
BUSINESSES



ADDRESS  
PAVEMENT AT THE  
END OF USEFUL  
LIFE

BEGIN PROJECT

MEMORIAL HIGHWAY

END PROJECT



# Existing Conditions

---

# Existing Conditions: Roadway

- Failing Subgrade



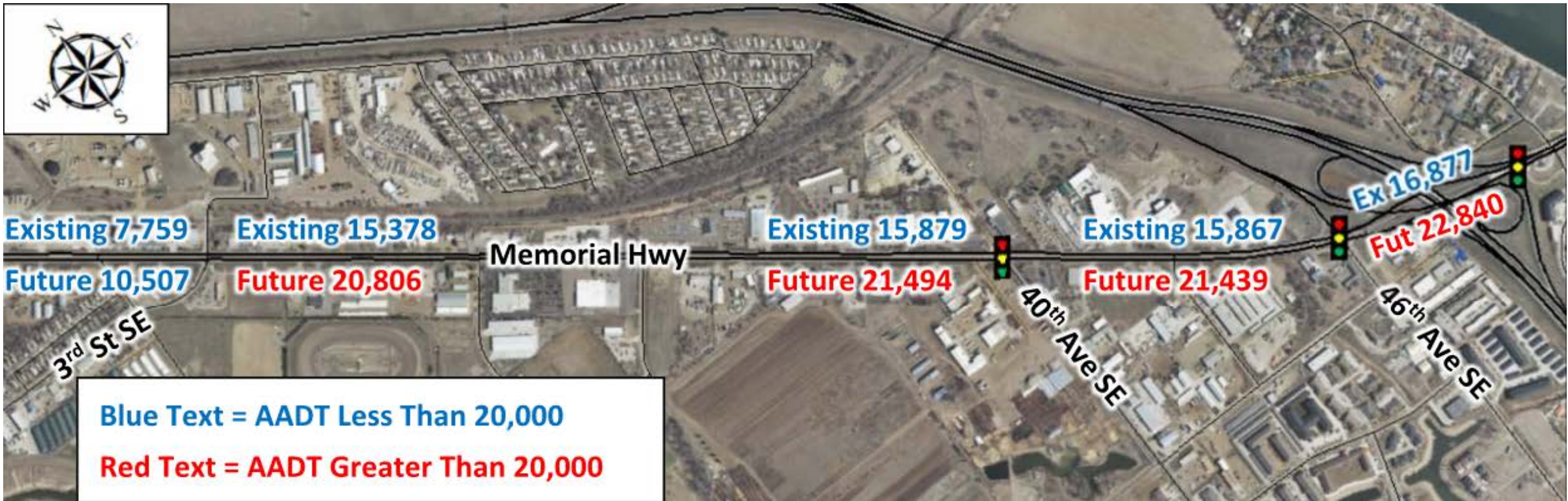


# Existing Conditions: Drainage





# Existing Conditions: Traffic Operations/Access Management



- 112 Existing Access Points



# Existing Conditions: Pedestrians





# Existing Conditions: City Utilities

- Replace Water Main
- Rehabilitate Sanitary Sewer



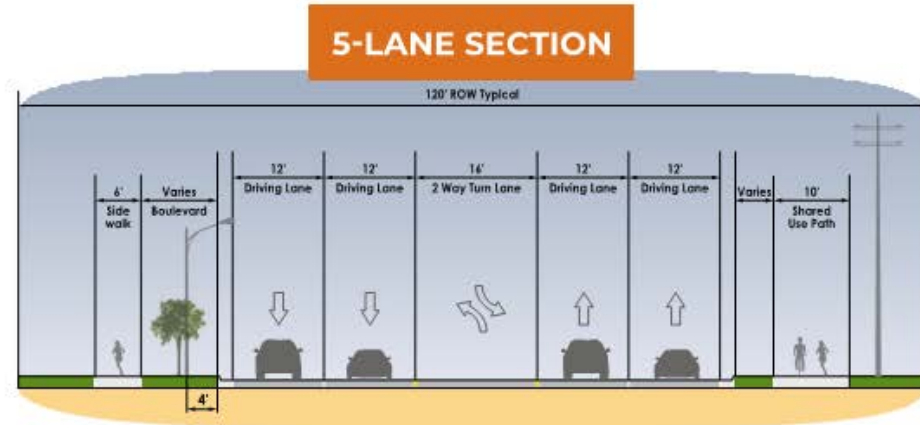
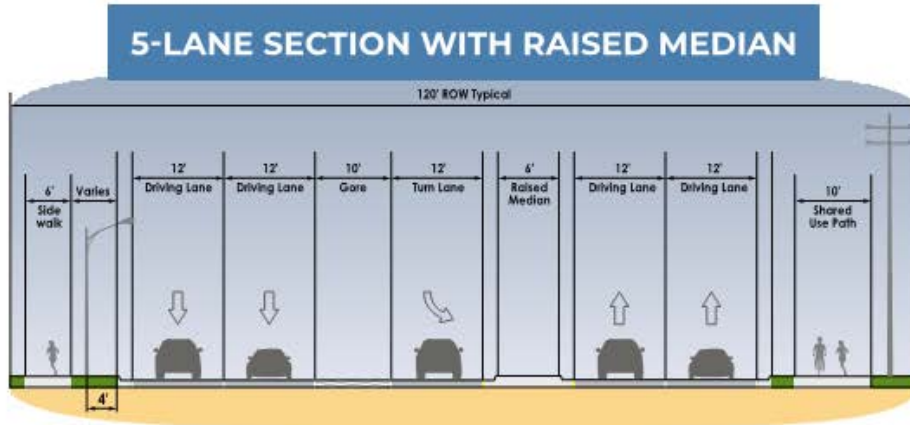


# Proposed Improvements

---



# Typical Section



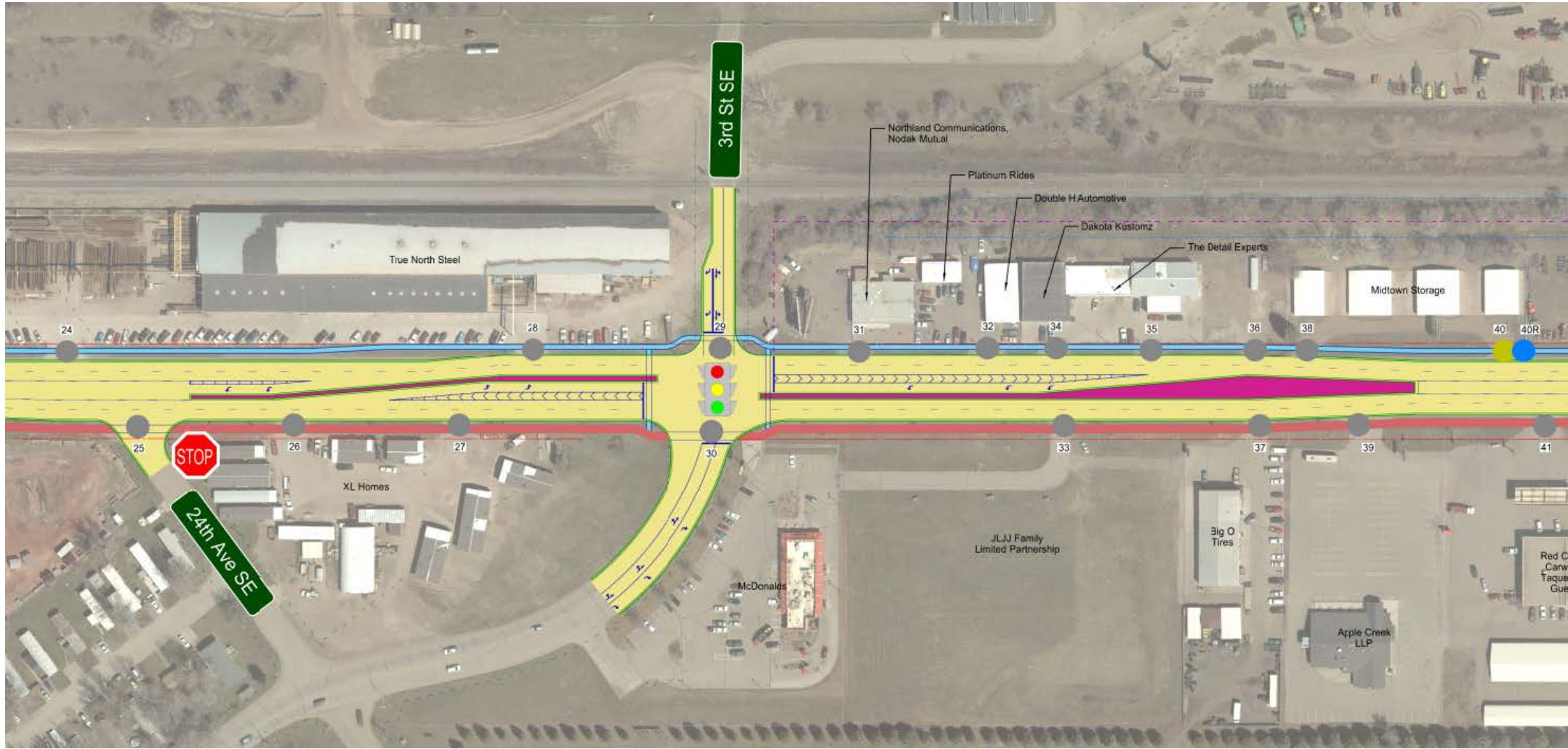
## MEMORIAL HIGHWAY LOCATIONS:





# Intersection Improvements

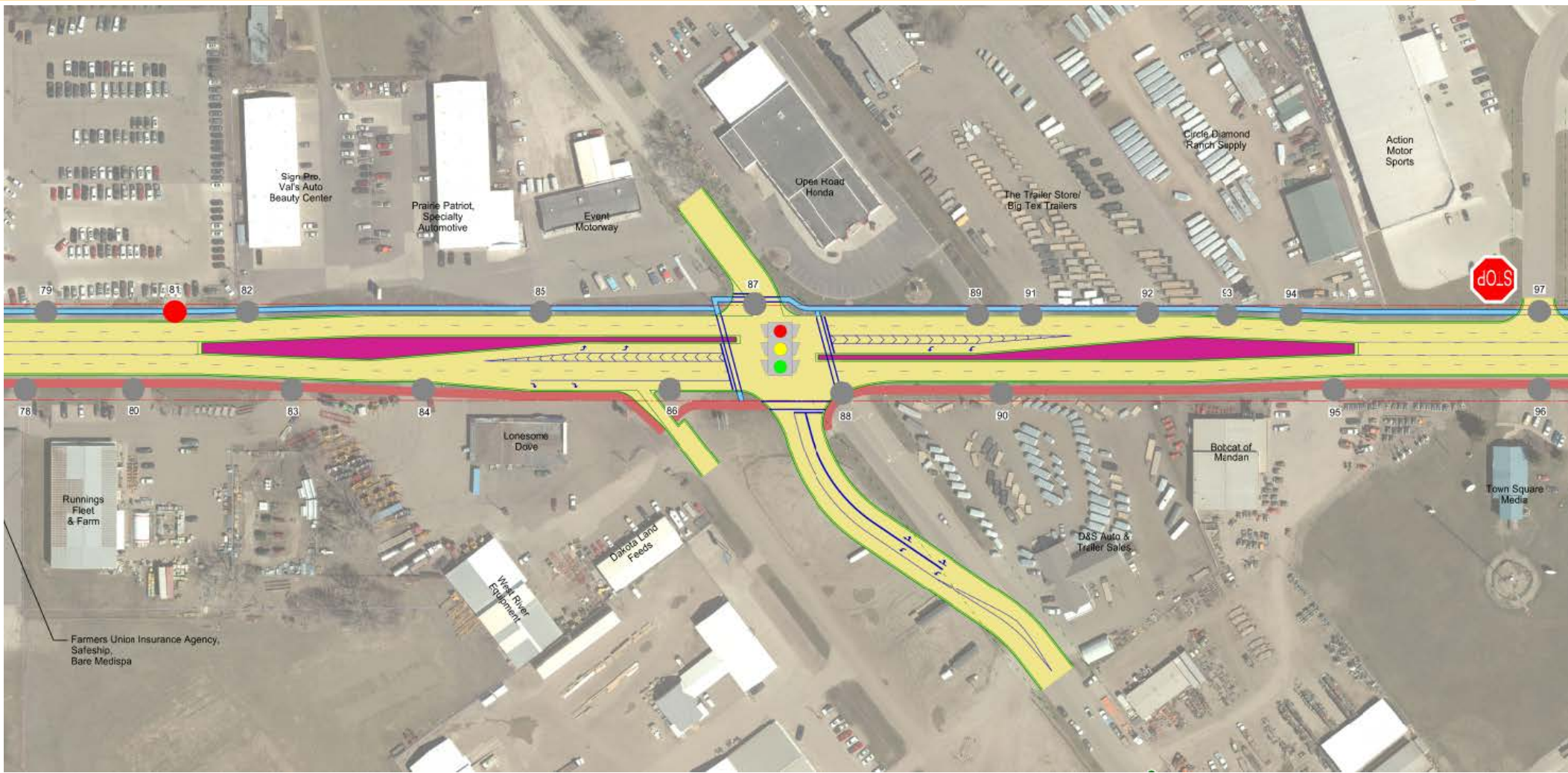
3<sup>rd</sup> Street:





# Intersection Improvements

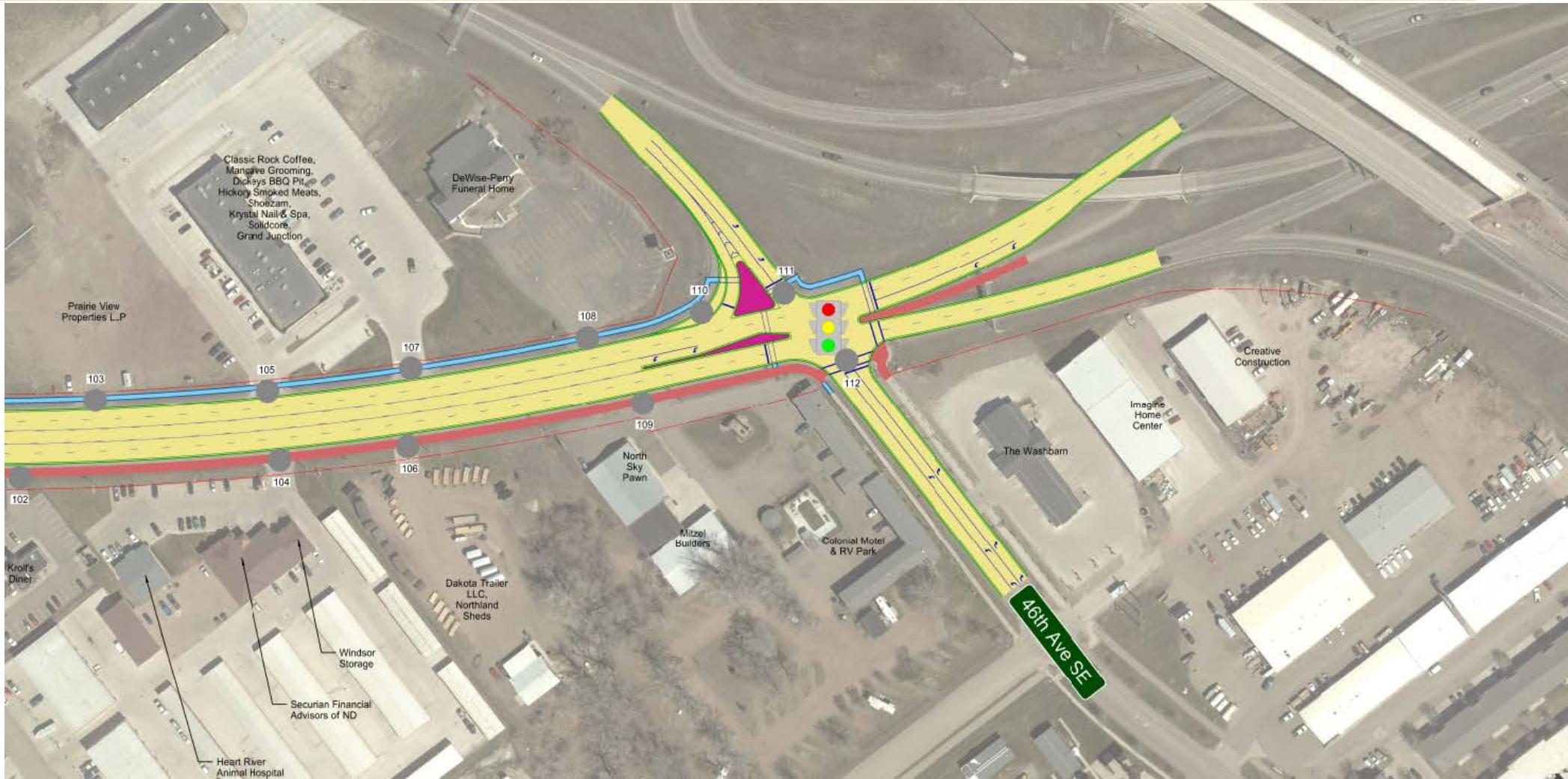
40<sup>th</sup> Avenue:





# Intersection Improvements

## 46<sup>th</sup> Avenue:

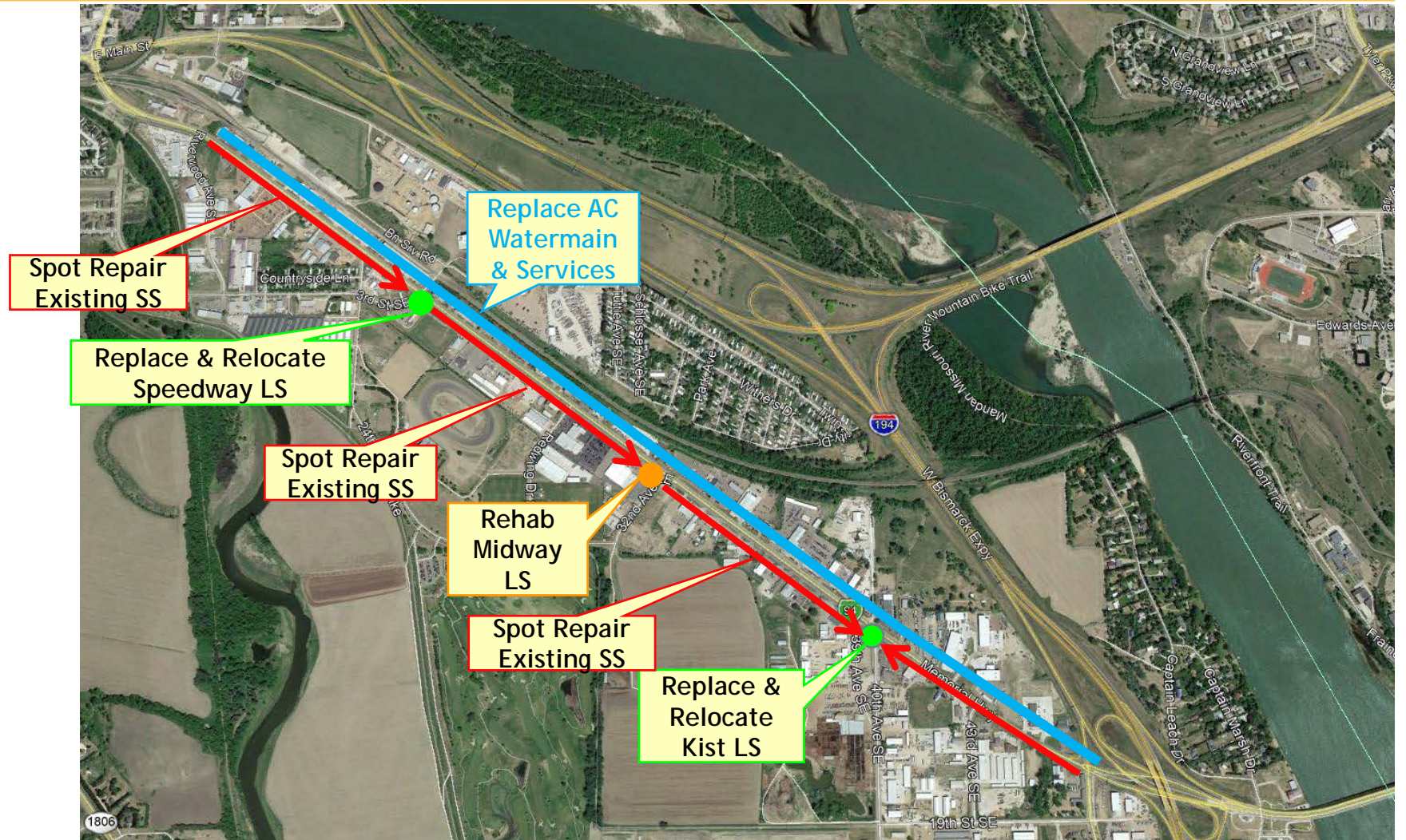




# City Utilities

## Proposed Improvements:

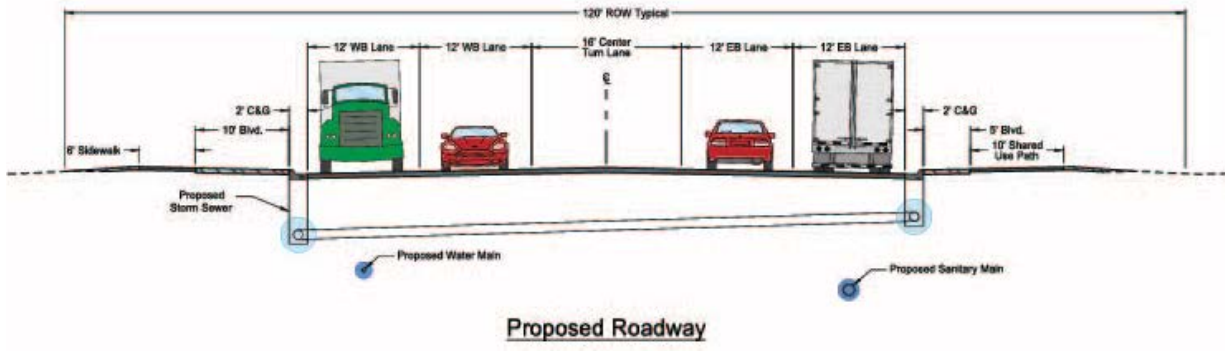
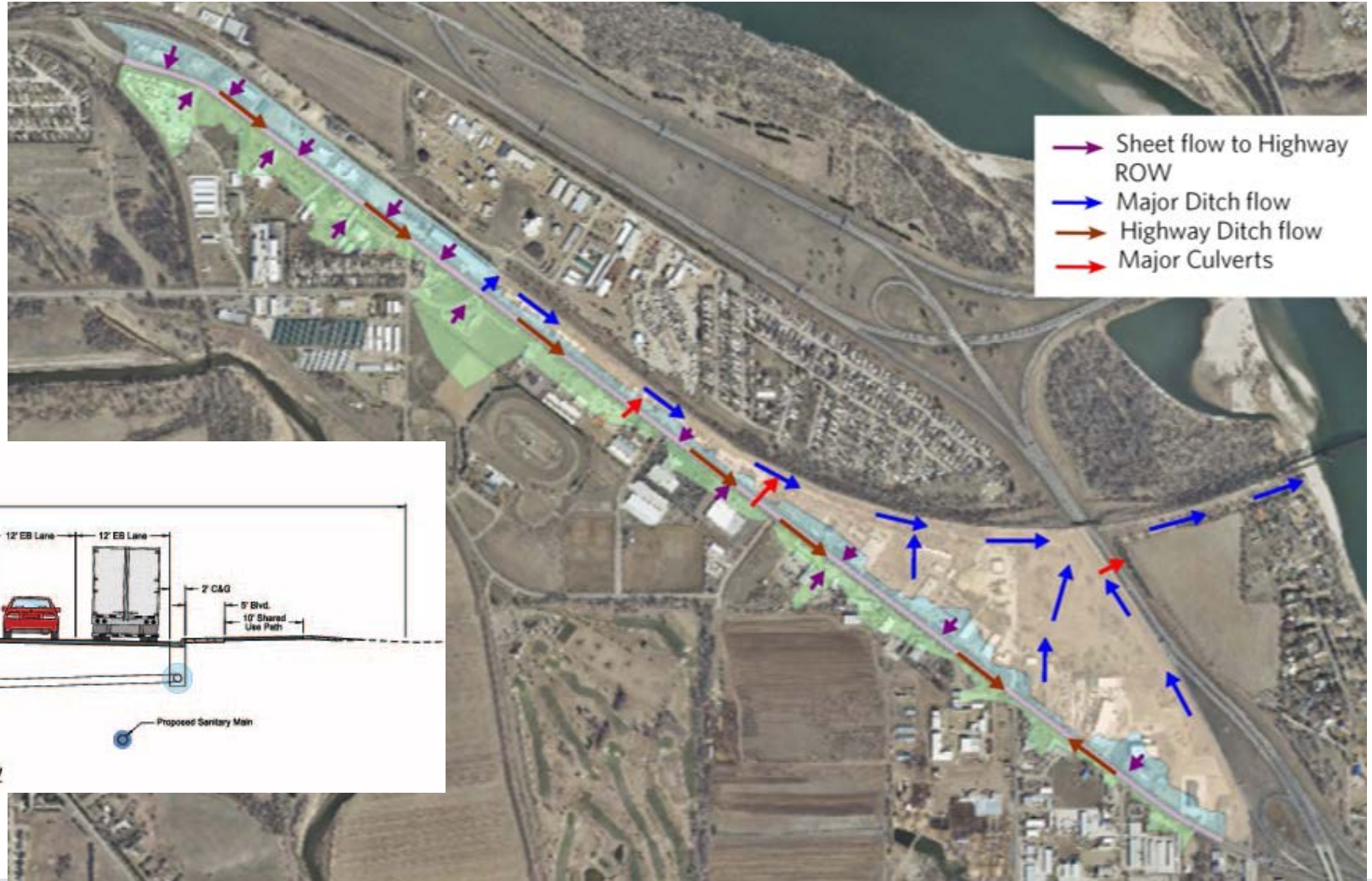
- Full Water Replacement
- Limited Sanitary Replacement
- Rehab or Replace Lift Stations





# Drainage

## Existing Drainage Constraints





# Environmental Documentation

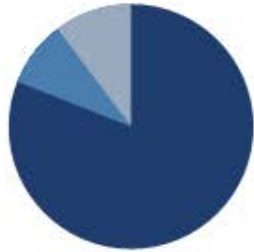
## Documented Categorical Exclusion (DCE)

- Aquatic Resources Delineation
- Architectural
- Section 4(f)
- Levee/Stopwall





# Funding



## Project Cost Share:

- Federal Cost Share: 80.93%
- State Cost Share: 9.07%
- Local Cost Share: 10%



Additional  
City of Mandan  
Utilities Upgrade Cost

## COST SHARE BREAKDOWN:



FEDERAL COST SHARE



STATE COST SHARE



LOCAL COST SHARE

Roadway & Storm



Potential Utility Upgrades

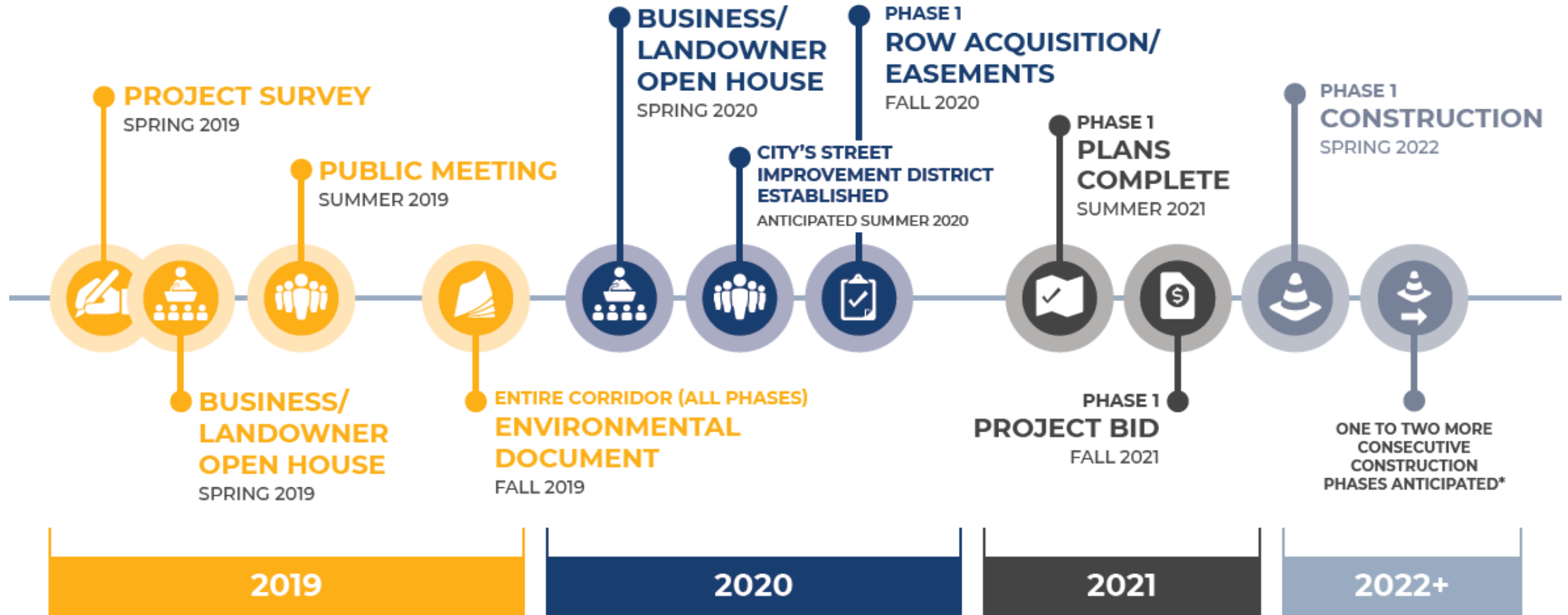
Expected Project Costs

ADDITIONAL CITY  
UTILITY COST

Water & Sanitary Sewer



# Project Schedule



\*Project phasing and sequencing will be determined during the preliminary engineering phase



# Contact Us

---

Website: <https://www.dot.nd.gov/projects/memorialhwy/index.htm>

Craig Mizera, Project Manager: 701.557.9604

[nddotmemorialhighway@gmail.com](mailto:nddotmemorialhighway@gmail.com)



NORTH  
**Dakota** | Transportation