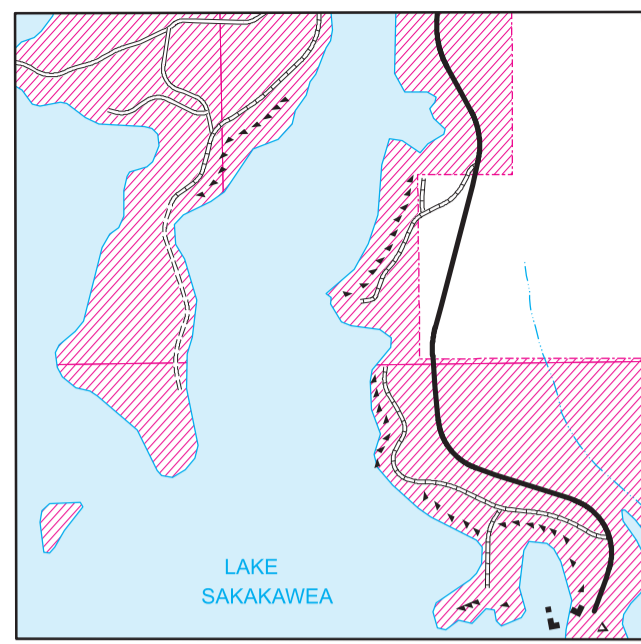
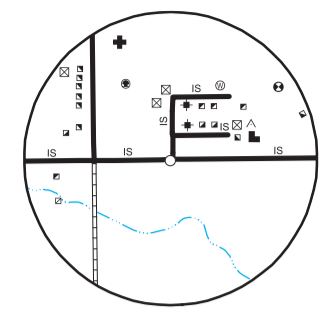


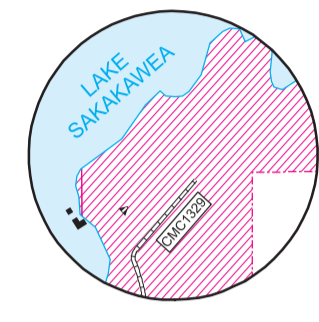
INSET NO. 4  
SECS. 3, 4, T. 147 N., R. 92 W.



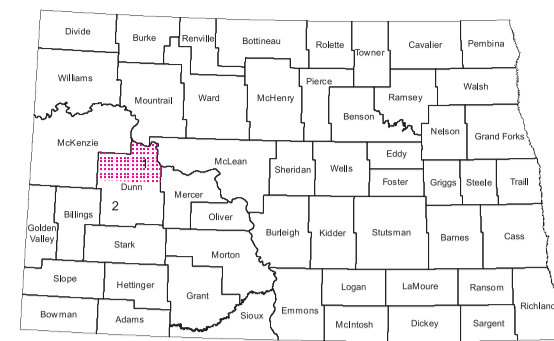
INSET NO. 1  
SECS. 26, 27, 34, & 35, T. 148 N., R. 92 W.



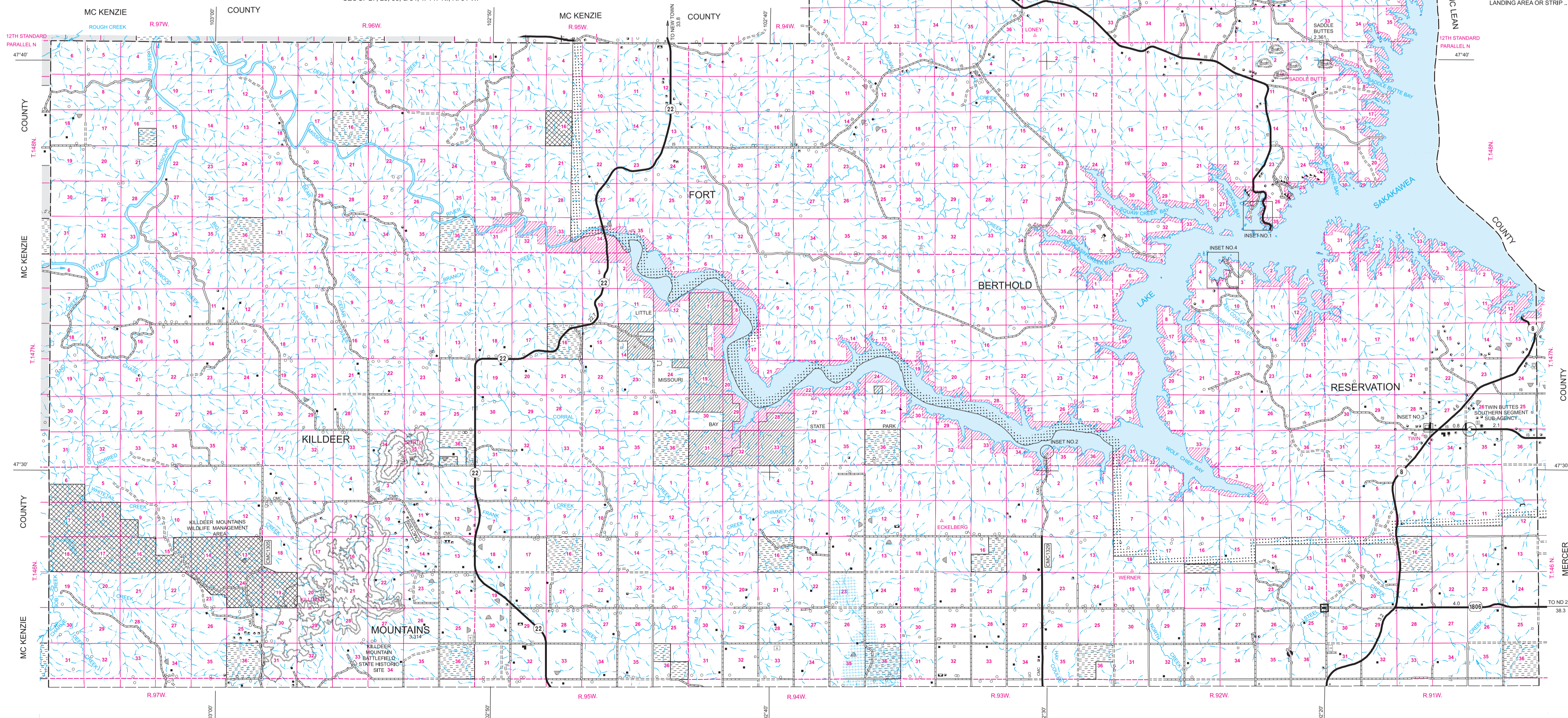
INSET NO. 2  
SECS. 34, & 35, T. 147 N., R. 93 W.



INSET NO. 3  
SECS. 27, 28, 33, & 34, T. 147 N., R. 91 W.



STATE OF NORTH DAKOTA  
DIAGRAM OF COUNTIES

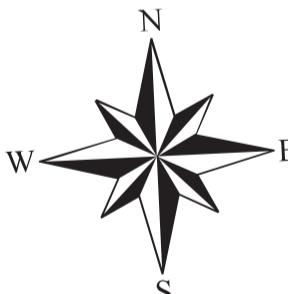


- ROADS AND ROADWAY FEATURES**
- PRIMITIVE ROAD
  - UNIMPROVED ROAD
  - GRADED AND DRAINED ROAD
  - GRAVEL GRADED AND DRAINED ROAD
  - PAVED ROAD
  - STREETS IN UNINCORPORATED AREAS
  - INDIAN SERVICE ROAD
  - COUNTY MAJOR COLLECTOR
  - ROUTE NUMBER
  - POINTS BETWEEN WHICH DISTANCES ARE MEASURED
  - U.S. NUMBERED HIGHWAY
  - STATE HIGHWAY SYSTEM
- DRAINAGE**
- INTERMITTENT STREAM (NARROW)
  - NARROW STREAM
  - WIDE STREAM
  - WIDE STREAM WITH DAM
  - LAKE, RESERVOIR, OR POND
  - LAKE, RESERVOIR, OR POND WITH DAM
  - MARSH OR SWAMP LAND
- NAVIGATION**
- DOCK, PIER, OR LANDING
- STRUCTURES**
- HIGHWAY BRIDGE, GENERAL
  - DAM WITH ROAD
  - MINOR DRAINAGE STRUCTURE
  - CONCRETE FORD OR DIP
  - FORD - ROAD ESTABLISHED
- CITY AND VILLAGE CENTERS**
- COUNTY SEAT
  - OTHER CITIES AND VILLAGES
  - INCORPORATED CITY OR VILLAGE (GENERALIZED)
- AIRPORTS**
- AIRFIELD, LIMITED FACILITIES
  - LANDING AREA OR STRIP

- GENERAL LEGEND**
- INDUSTRIAL**
- STORE OR SMALL BUSINESS
  - GROUP OF STORAGE TANKS (OIL OR GAS)
  - FILLING STATION
  - PUMPING STATION (OIL OR GAS)
  - GAUGING OR PUMPING STATION
  - WAREHOUSE - GENERAL
  - GRAVEL PIT
  - OIL OR GAS WELL
  - MINE - SHAFT OR DRIFT (ANY KIND)
  - SAWMILL (STATIONARY)
- BOUNDARIES**
- COUNTY LINE
  - TOWNSHIP LINE
  - CORPORATE LINE
  - SECTION LINE
  - MATCH LINE BETWEEN ADJOINING SHEETS OF SAME COUNTY
  - BOUNDARY TO MARK ENLARGEMENT INSET
  - NATIONAL REFUGES
  - MONUMENT - SMALL, HISTORIC SITE
  - WILDLIFE MANAGEMENT AREA
  - WATERFOWL PRODUCTION AREA
  - STATE PARKS
  - NATIONAL GRASSLANDS
  - RESERVOIR BOUNDARY (TAKING LINE)
  - NATIONAL PARKS AND OTHER RESERVATIONS
- MISCELLANEOUS**
- TRIANGULATION STATION
  - DOT TO INDICATE LOCATION OF ANY CULTURAL FEATURE
  - SHOWN OUT OF POSITION
  - ALL VACANT CULTURE INDICATED BY OPEN SYMBOL
  - LATITUDE AND LONGITUDE
  - PROMINENT ELEVATION - WITH NAME
- PUBLIC SERVICE FACILITIES**
- POST OFFICE
  - GARBAGE OR RUBBISH DUMP
  - SEWAGE DISPOSAL PLANT
  - WATER SUPPLY STAND PIPE OR TANK
  - POWER SUBSTATION
  - COMMUNICATION TOWER
  - MUNICIPAL BUILDING
  - COURTHOUSE
- FARM UNITS, DWELLINGS, ETC.**
- FARM UNIT (FARM UNITS SHOWN IN MUNICIPAL LIMITS INDICATE FARM BUILDINGS FOR FARM USE)
  - DWELLING OTHER THAN FARM
  - BARRACKS, OR DORMATORIES FOR STUDENTS, WORKERS, MIGRANTS, ETC.
  - SEASONAL OR SUMMER COLONY
  - DWELLING
  - SEASONAL DWELLINGS CLOSELY SPACED
  - HOTEL OR INN
  - CHURCH
  - CEMETERY
  - CHURCH WITH CEMETERY ADJACENT
  - HOSPITAL
  - TENANT HOUSE
- CONSERVATION AND RECREATION**
- PICNIC GROUND
  - PLAYGROUND, BALL FIELD, ETC.
  - TOURIST COURT, MAN CAMP, OR MOTEL
  - SMALL PARK (SP-STATE, CP-COUNTY, MP-MUNICIPAL, WP-WAYSIDE PARK)
  - FAIR GROUND, RACE COURSE, SPEEDWAY
  - RIDING ACADEMY
- EDUCATIONAL AND CORRECTIONAL INSTITUTIONS**
- SCHOOLHOUSE
  - TOWNHALL, GRANGE, OR COMMUNITY HALL
  - AGRICULTURAL EXPERIMENT STATION

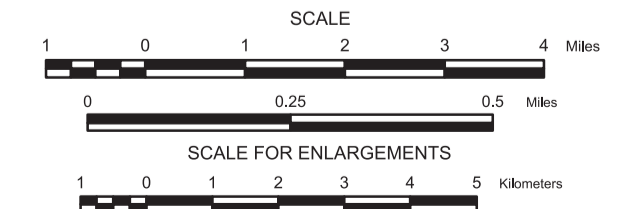
**NAME AND LOCATION OF ORGANIZED CIVIL TOWNSHIPS THOSE UNORGANIZED ARE SO NOTED**

T. 150 N.-R. 93 W. UNORGANIZED	T. 146 N.-R. 97 W. UNORGANIZED	T. 143 N.-R. 97 W. UNORGANIZED
T. 150 N.-R. 92 W. UNORGANIZED	T. 146 N.-R. 96 W. UNORGANIZED	T. 143 N.-R. 96 W. UNORGANIZED
T. 150 N.-R. 91 W. UNORGANIZED	T. 146 N.-R. 95 W. UNORGANIZED	T. 143 N.-R. 95 W. UNORGANIZED
T. 149 N.-R. 93 W. UNORGANIZED	T. 146 N.-R. 94 W. UNORGANIZED	T. 143 N.-R. 94 W. UNORGANIZED
T. 149 N.-R. 92 W. UNORGANIZED	T. 146 N.-R. 93 W. UNORGANIZED	T. 143 N.-R. 93 W. UNORGANIZED
T. 149 N.-R. 91 W. UNORGANIZED	T. 146 N.-R. 92 W. UNORGANIZED	T. 143 N.-R. 92 W. UNORGANIZED
T. 148 N.-R. 97 W. UNORGANIZED	T. 146 N.-R. 91 W. UNORGANIZED	T. 143 N.-R. 91 W. UNORGANIZED
T. 148 N.-R. 96 W. UNORGANIZED	T. 146 N.-R. 90 W. UNORGANIZED	T. 142 N.-R. 97 W. UNORGANIZED
T. 148 N.-R. 95 W. UNORGANIZED	T. 146 N.-R. 89 W. UNORGANIZED	T. 142 N.-R. 96 W. UNORGANIZED
T. 148 N.-R. 94 W. UNORGANIZED	T. 146 N.-R. 88 W. UNORGANIZED	T. 142 N.-R. 95 W. UNORGANIZED
T. 148 N.-R. 93 W. UNORGANIZED	T. 146 N.-R. 87 W. UNORGANIZED	T. 142 N.-R. 94 W. UNORGANIZED
T. 148 N.-R. 92 W. UNORGANIZED	T. 146 N.-R. 86 W. UNORGANIZED	T. 142 N.-R. 93 W. UNORGANIZED
T. 148 N.-R. 91 W. UNORGANIZED	T. 146 N.-R. 85 W. UNORGANIZED	T. 142 N.-R. 92 W. UNORGANIZED
T. 147 N.-R. 97 W. UNORGANIZED	T. 145 N.-R. 97 W. UNORGANIZED	T. 142 N.-R. 91 W. UNORGANIZED
T. 147 N.-R. 96 W. UNORGANIZED	T. 145 N.-R. 96 W. UNORGANIZED	T. 141 N.-R. 97 W. UNORGANIZED
T. 147 N.-R. 95 W. UNORGANIZED	T. 145 N.-R. 95 W. UNORGANIZED	T. 141 N.-R. 96 W. UNORGANIZED
T. 147 N.-R. 94 W. UNORGANIZED	T. 145 N.-R. 94 W. UNORGANIZED	T. 141 N.-R. 95 W. UNORGANIZED
T. 147 N.-R. 93 W. UNORGANIZED	T. 145 N.-R. 93 W. UNORGANIZED	T. 141 N.-R. 94 W. UNORGANIZED
T. 147 N.-R. 92 W. UNORGANIZED	T. 145 N.-R. 92 W. UNORGANIZED	T. 141 N.-R. 93 W. UNORGANIZED
T. 147 N.-R. 91 W. UNORGANIZED	T. 145 N.-R. 91 W. UNORGANIZED	T. 141 N.-R. 92 W. UNORGANIZED
	T. 144 N.-R. 97 W. UNORGANIZED	T. 141 N.-R. 91 W. UNORGANIZED
	T. 144 N.-R. 96 W. UNORGANIZED	
	T. 144 N.-R. 95 W. UNORGANIZED	
	T. 144 N.-R. 94 W. UNORGANIZED	
	T. 144 N.-R. 93 W. UNORGANIZED	
	T. 144 N.-R. 92 W. UNORGANIZED	
	T. 144 N.-R. 91 W. UNORGANIZED	



**GENERAL HIGHWAY MAP  
DUNN COUNTY  
NORTH DAKOTA**

PREPARED BY THE  
NORTH DAKOTA DEPARTMENT OF TRANSPORTATION  
PLANNING / ASSET MANAGEMENT DIVISION  
IN COOPERATION WITH THE  
U.S. DEPARTMENT OF TRANSPORTATION  
FEDERAL HIGHWAY ADMINISTRATION



2013

**Notice of Disclaimer**  
The North Dakota Department of Transportation (NDDOT) makes this map available on an "as is" basis as a public service. Under no circumstances does NDDOT warrant or certify the information to be free of errors or deficiencies of any kind. NDDOT specifically disclaims all warranties, express or implied, including but not limited to the warranties of merchantability and fitness for a particular purpose.

COPIES OF THIS MAP ARE AVAILABLE FOR PUBLIC USE AT A NOMINAL COST FROM:  
MAP SALES, N.D. DEPT. OF TRANSPORTATION, 608 E. BLVD. AVE., BISMARCK, N.D. 58505-0700

BASED ON AERIAL PHOTOGRAPHY OF 1958  
GROUND INVENTORY OF 2013  
AERIAL INVENTORY OF 2013

UNIVERSAL TRANSVERSE MERCATOR ZONE 14  
NORTH AMERICAN DATUM 83