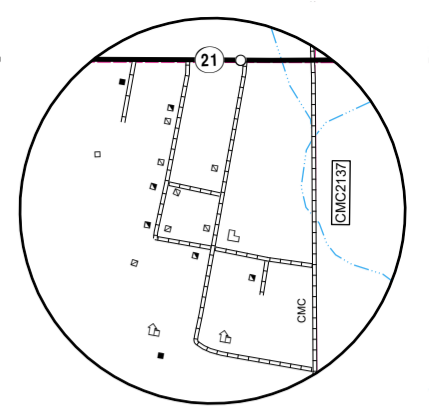
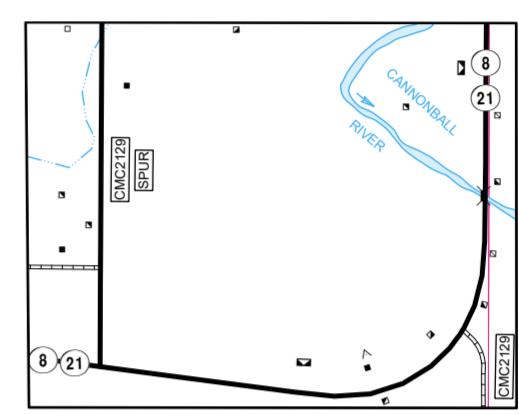


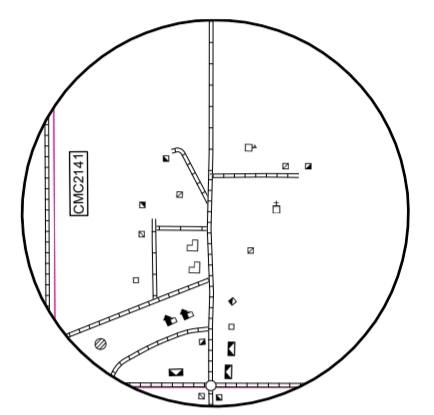
STATE OF NORTH DAKOTA
DIAGRAM OF COUNTIES



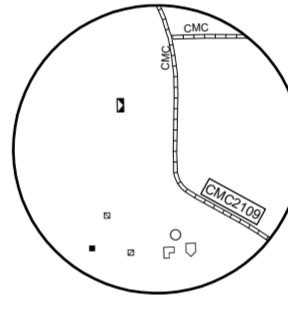
BURT
SECS. 5 & 6, T. 133 N., R. 91 W.
SECS. 31 & 32, T. 134 N., R. 91 W.



MOTT
SECS. 1 & 2, T. 133 N., R. 93 W.

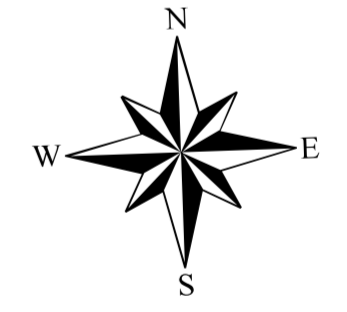


BENTLEY
SECS. 13, 14, & 24, T. 133 N., R. 91 W.



HAVELOCK
SEC. 28, T. 135 N., R. 96 W.

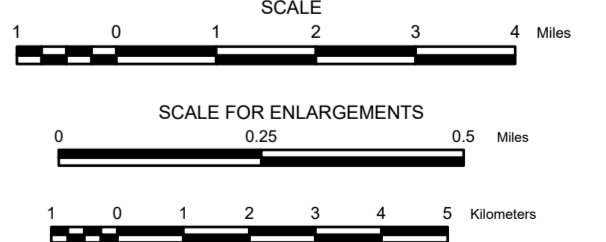
- NAME AND LOCATION OF ORGANIZED CIVIL TOWNSHIPS THOSE UNORGANIZED ARE SO NOTED
- | | |
|--------------------------------|---------------------------------|
| T. 136 N.-R. 97 W. KUNZE | T. 134 N.-R. 95 W. INDIAN CREEK |
| T. 136 N.-R. 96 W. CLARK | T. 134 N.-R. 94 W. FARINA |
| T. 136 N.-R. 95 W. RIFLE | T. 134 N.-R. 93 W. MOTT |
| T. 136 N.-R. 94 W. MADISON | T. 134 N.-R. 92 W. BEERY |
| T. 136 N.-R. 93 W. CAMPBELL | T. 134 N.-R. 91 W. SOLON |
| T. 136 N.-R. 92 W. HIGHLAND | T. 133 N.-R. 97 W. KENNEDY |
| T. 136 N.-R. 91 W. ODESSA | T. 133 N.-R. 96 W. WAGENDORF |
| T. 135 N.-R. 97 W. NEW ENGLAND | T. 133 N.-R. 95 W. ALDEN |
| T. 135 N.-R. 96 W. HAVELOCK | T. 133 N.-R. 94 W. CHILTON |
| T. 135 N.-R. 95 W. BLACK BUTTE | T. 133 N.-R. 93 W. CASTLE ROCK |
| T. 135 N.-R. 94 W. ST. CROIX | T. 133 N.-R. 92 W. BRITTIAN |
| T. 135 N.-R. 93 W. ACME | T. 133 N.-R. 91 W. CANNONBALL |
| T. 135 N.-R. 92 W. STEINER | T. 132 N.-R. 94 W. ASHBY |
| T. 134 N.-R. 91 W. WALKER | T. 132 N.-R. 93 W. KERN |
| T. 134 N.-R. 97 W. STREHLOW | T. 132 N.-R. 92 W. MERRILL |
| T. 134 N.-R. 96 W. TEPEE BUTTE | T. 132 N.-R. 91 W. BAER |



GENERAL HIGHWAY MAP HETTINGER COUNTY NORTH DAKOTA

PREPARED BY THE
NORTH DAKOTA DEPARTMENT OF TRANSPORTATION
PLANNING / ASSET MANAGEMENT DIVISION

IN COOPERATION WITH THE
U.S. DEPARTMENT OF TRANSPORTATION
FEDERAL HIGHWAY ADMINISTRATION



2020

BASED ON AERIAL PHOTOGRAPHY OF 1957
AERIAL INVENTORY OF 2020

UNIVERSAL TRANSVERSE MERCATOR ZONE 14
NORTH AMERICAN DATUM 83

- ROADS AND ROADWAY FEATURES**
- PRIMITIVE ROAD
 - UNIMPROVED ROAD
 - GRAVEL GRADED ROAD
 - GRAVEL GRADED AND DRAINED ROAD
 - PAVED ROAD
 - BOUNDARY TO MARK
 - ENLARGEMENT INSET
 - STREETS IN UNINCORPORATED AREAS
 - COUNTY MAJOR COLLECTOR
 - ROUTE NUMBER
 - POINTS BETWEEN WHICH DISTANCES ARE MEASURED
 - U.S. NUMBERED HIGHWAY
 - STATE HIGHWAY SYSTEM
- STRUCTURES**
- HIGHWAY BRIDGE, GENERAL
 - DAM WITH ROAD
 - MINOR DRAINAGE STRUCTURE
 - CONCRETE FORD OR DIP
 - FORD - ROAD ESTABLISHED
- EDUCATIONAL & CORRECTIONAL INSTITUTIONS**
- SCHOOLHOUSE
 - TOWNHALL, GRANGE, OR COMMUNITY HALL
 - NAVIGATION
 - DOCK, PIER, OR LANDING
- BOUNDARIES**
- COUNTY LINE
 - TOWNSHIP LINE
 - CORPORATE LINE
 - SECTION LINE
 - BOUNDARY TO MARK
 - ENLARGEMENT INSET
 - WILDLIFE MANAGEMENT AREA
 - WATERFOWL PRODUCTION AREA
 - STATE SCHOOL LAND
- INDUSTRIAL**
- STORE OR SMALL BUSINESS
 - ESTABLISHMENT
 - GROUP OF STORAGE TANKS (OIL OR GAS)
 - PUMPING STATION (OIL OR GAS)
 - GAUGING OR PUMPING STATION
 - WAREHOUSE - GENERAL
 - GRAIN ELEVATOR
 - STOCK YARD - LOADING PEN OR CORRAL
 - GRAVEL PIT
 - OIL OR GAS WELL
 - MINE - SHAFT OR DRIFT (ANY KIND)
 - WIND TURBINE
 - GAS TANK
- FARM UNITS, DWELLINGS, ETC.**
- FARM UNIT (FARM UNITS SHOWN IN MUNICIPAL LIMITS INDICATE FARM BUILDINGS FOR FARM USE)
 - DWELLING OTHER THAN FARM
 - ROWS OR GROUPS OF DWELLINGS CLOSELY SPACED (FIGURE DENOTES NUMBER OF DWELLINGS)
 - CHURCH
 - CEMETERY
 - CHURCH WITH CEMETERY ADJACENT
 - DRAINAGE
 - INTERMITTENT STREAM (NARROW)
 - NARROW STREAM
 - WIDE STREAM
 - WIDE STREAM WITH DAM
 - LAKE, RESERVOIR, OR POND
 - LAKE, RESERVOIR, OR POND WITH DAM
 - MARSH OR SWAMP LAND
- CITY AND VILLAGE CENTERS**
- COUNTY SEAT
 - INCORPORATED CITY OR VILLAGE (GENERALIZED)
 - NATURAL FEATURES
 - PROMINENT ELEVATION - WITH NAME
- PUBLIC SERVICE FACILITIES**
- HIGHWAY GARAGE
 - FIRE ENGINE HOUSE
 - GARBAGE OR RUBBISH DUMP
 - SEWAGE DISPOSAL PLANT
 - AUTOMOBILE GRAVEYARD
 - WATER SUPPLY STAND PIPE OR TANK
 - POWER SUBSTATION
 - COMMUNICATION TOWER
- CONSERVATION AND RECREATION**
- PICNIC GROUND
 - CAMP SITE, NO PERMANENCE (TENTS OR TRAILER PARKING)
 - GOLF GROUND OR COUNTRY CLUB
- AIRPORTS**
- AIRFIELD, LIMITED FACILITIES
 - LANDING AREA OR STRIP
- MISCELLANEOUS**
- TRIANGULATION STATION
 - OTHER CITIES AND VILLAGES
 - ANY CULTURAL FEATURE SHOWN OUT OF POSITION
 - ALL VACANT CULTURE INDICATED BY OPEN SYMBOL
 - LATITUDE AND LONGITUDE

Notice of Disclaimer

The North Dakota Department of Transportation (NDOT) makes this map available on an "as is" basis as a public service. Under no circumstances does NDOT warrant or certify the information to be free of errors or deficiencies of any kind. NDOT specifically disclaims all warranties, express or implied, including but not limited to the warranties of merchantability and fitness for a particular purpose.