



# AUTOMATIC TRAFFIC DATA

February 2021



Prepared by  
**NORTH DAKOTA DEPARTMENT OF TRANSPORTATION**  
BISMARCK, NORTH DAKOTA  
[www.dot.nd.gov](http://www.dot.nd.gov)

**DIRECTOR**  
William T. Panos

PLANNING AND ASSET MANAGEMENT DIVISION  
Scott D. Zainhofsky, P. E., Director

**Principal Author**  
Nikkie Reis, Traffic Data Section

# CONTENTS

The Fast Lane

## **Part 1 - ALL TRAFFIC**

1. ATR Locations
2. ATR Locations Map
3. WIM Locations Map
4. Average Daily Traffic Graph
5. Average Daily Traffic Year to Date Graph
6. ADT and Percent Change by Functional Class
7. ADT and Percent Change by Station

## **Part 2 -TRUCK TRAFFIC**

1. ATR Locations
2. Average Daily Traffic Graph – Trucks
3. Average Daily Traffic Year to Date Graph – Trucks
4. ADT and Percent Change by Functional Class
5. ADT and Percent Change by Station

More detailed information is available and can be obtained by contacting Nickie Reis, Traffic Data Section of the Planning and Asset Management Division of the North Dakota Department of Transportation, 608 East Boulevard Ave, Bismarck, ND 58505, (701)328-3458 or [nreis@nd.gov](mailto:nreis@nd.gov)

# The Fast Lane

(When you just don't have time for the whole report)

February 2021

*In the following observations, when I talk about increases and decreases, I am referring to how the numbers compared to the same month one year before. For example: February 2021 versus February 2020. We are now breaking this report down into two parts: Part 1 gives overall information about all the vehicles passing the recording devices and Part 2 deals only with truck traffic.*

## Part 1 – ALL TRAFFIC

### Graph

When we total all the traffic at all the ATRs, we see a graphic depiction of how this year's traffic compares to last year's. For this month, the traffic is 13.5 % lower than it was last February.

### Functional Class Groups

When we break the state's highways down into the various classes of highways, we see some interesting facts. Let's look at the following functional classes:

- **Urban Interstate 94** – decreased 8.0 %
- **Rural Interstate 94** – decreased 7.8 %
- **Urban Interstate 29 (this group is comprised of only one station)** – decreased 11.6 %
- **Rural Interstate 29** – decreased 11.4 %
- **Rural Principal Arterial** – decreased 24.7 %
- **Rural Minor Arterial** – decreased 19.1 %
- **Rural Major Collector – State** – decreased 24.4 %
- **Rural Major Collector – County** – decreased 2.0 %
- **Urban Principal Arterial** – decreased 7.6 %
- **Urban Minor Arterial** – decreased 11.0 %
- **Urban Collector & Local Urban (this group is comprised of only one station)** - decreased 8.9 %

### Individual Stations

Compared to last February, 3 of the 81 stations showed an increase. Of the remaining 78 stations, 78 decreased and 0 had no change.

## Part 2 – TRUCK TRAFFIC

### Graph

When we total just the truck traffic at all the ATRs, we see a graphic depiction of how this year's traffic compares to last year's. For this month, truck traffic is 19.0 % lower than it was last February.

### Functional Class Groups

- **Urban Interstate** – increased 2.7 %
- **Rural Interstate** – increased 2.2 %
- **Rural Principal Arterial** – decreased 35.7 %
- **Rural Minor Arterial** – decreased 25.5 %
- **Rural Major Collector – State** – decreased 44.0 %
- **Rural Major Collector – County** – increased 7.4 %
- **Urban Principal Arterial** – decreased 0.3 %

### Individual Stations

Of the 73 stations that could be used to compare trucks, 14 increased from February 2020. Of the remaining 59 stations, 58 decreased and 1 did not change. The western 1/3 saw 82% of its stations decrease compared to 65% in the eastern 1/3 & 89% in the central 1/3.

PART 1

# ALL TRAFFIC

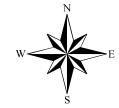
**NORTH DAKOTA DEPARTMENT OF TRANSPORTATION  
ATR LOCATIONS**

<b>STATION</b>	<b>NAME</b>	<b>HIGHWAY</b>	<b>REF POINT</b>	<b>OFF SET</b>	<b>TYPE</b>	<b>LOCATION</b>
<b>URBAN INTERSTATE 94</b>						
217	FARGO (U)	94	352.000	0.3327	Class	RED RIVER BRIDGE
283	BISMARCK (U)	94	158.000	0.8538	Class	0.4 MILES WEST OF US 83 INT.
<b>RURAL INTERSTATE 94</b>						
207	MEDINA	94	231.000	0.2923	Class	0.9 MILES EAST OF MEDINA
223	NEW SALEM	94	126.000	0.8803	Class	0.8 MILES WEST OF ND 31 INT.
245	TOWER CITY	94	312.000	0.5100	Class	2.3 MILES WEST OF BUFFALO INT.
279	PAINTED CANYON	94	34.000	0.6637	Class	7.8 MILES WEST OF US 85 INT.
<b>URBAN INTERSTATE 29</b>						
235	FARGO (U)	29	66.255	0.5725	Class	NORTH OF 12TH AVE.
<b>RURAL INTERSTATE 29</b>						
211	BUXTON	29	112.000	0.8614	Class	4.0 MILES NORTH OF MAYVILLE INT.
243	BOWESMONT	29	196.014	0.5726	Class	0.5 MILES NORTH OF BOWESMONT
265	MOORETON	29	25.000	0.0149	Class	2.5 MILES NORTH OF ND 13
285	DAVENPORT	29	55.000	0.4798	Class	1.3 MILES NORTH OF DAVENPORT INT
<b>RURAL PRINCIPAL ARTERIAL</b>						
201	RAY	2	51.000	0.2986	Class	2.1 MILES WEST OF RAY
203	MAX	83	168.000	0.9400	Class	3.3 MILES SOUTH OF ND 53
205	GWINNER	13	337.000	0.2241	Class	2.1 MILES WEST OF ND 32
215	JAMESTOWN	52	259.000	0.5408	Class	2.5 MILES NORTH OF JAMESTOWN
219	MANDAN	6	55.000	0.8718	Class	11.0 MILES SOUTH OF MANDAN
221	FAIRFIELD	85	80.000	0.8850	Class	5.1 MILES NORTH OF I-94
229	COOPERSTOWN	200	345.000	0.2602	Class	4.0 MILES EAST OF COOPERSTOWN
233	FOXHOLM	52	78.000	0.2600	Class	1.5 MILES SOUTHEAST OF FOXHOLM
237	NEKOMA	1	205.000	0.2195	Class	8.5 MILES SOUTH LANGDON
239	NEW TOWN	23	42.000	0.8986	Class	4.7 MILES EAST OF ND 22
241	BOTTINEAU	5	173.000	0.9523	Class	0.2 MILES WEST OF ND 14
251	HAGUE	83	1.000	0.1144	Class	1.1 MILES NORTH OF SOUTH DAKOTA LINE
253	RUGBY	2	207.000	0.3265	Class	3.5 MILES WEST OF ND 3
255	CROSBY	5	28.000	0.7521	Class	6.0 MILES WEST OF CROSBY
257	WILLISTON	2	2.000	0.3979	Class	2.4 MILES EAST OF MONTANA LINE
261	CARRINGTON	281	117.000	0.9013	Class	5.5 MILES NORTH OF JUNCTION WITH HWY 200
271	GOLDEN VALLEY	200	131.000	0.0000	Class	0.7 MILES EAST OF GOLDEN VALLEY
273	NEW LEIPZIG	21	67.000	0.5500	Class	2.1 MILES WEST OF ND 49
281	SAWYER	52	102.000	0.7136	Class	WEST OF SAWYER
297	WILLISTON_NW	85	193.000	0.7000	Class	NW WILLISTON TRUCK RELIEVER ROUTE
299	KILLDEER200W	200	88.000	0.5200	Class	6.7 MILES WEST OF JCT. ND 22 AND ND 200
303	MICHIGAN	2	296.000	0.6500	Class	4.0 MILES EAST OF ND 1
307	WASHBURN	83	130.000	0.7300	Class	NORTH OF WASHBURN
309	NEWTOWN_EAST	23	58.000	0.7000	Class	8.4 MILES EAST OF NEW TOWN
311	WILLISTON_2N	2	27.000	0.6300	Class	5.2 MILES NORTH OF WILLISTON
315	RYDER_E23___	23	102.000	0.2000	Class	3.3 MILES WEST OF THE JUNCTION WITH US 83
337	BLAISDELL_E2	2	107.000	0.1000	Class	1.0 MILES EAST OF BLAISDELL
339	GRASSY_BUTTE	85	113.000	0.8500	Class	1.3 MILES NORTH OF GRASSY BUTTE
341	ALEXANDER85W	85	162.000	0.2080	Class	1/2 MILE W OF ALEXANDER
343	WATFORD_E23_	23	10.000	0.7000	Class	9.1 MILES EAST OF WATFORD CITY
345	WILLIAMS_N85	85	205.000	0.4800	Class	15.4 MILES NORTH OF WILLISTON
349	BEULAH_S49___	49	91.000	0.7700	Class	10.5 MILES SOUTH OF BEULAH
351	COLUMBUS_W5	5	52.000	0.2000	Class	3.2 MILES EAST OF NOONAN
353	GRANVILLE_E2	2	177.000	0.7600	Class	8.3 MILES EAST OF GRANVILLE
355	MOHALL_W5___	5	121.000	0.9700	Class	3.6 MILES WEST OF MOHALL
419	EMERADO_W2	2	340.000	0.5000	Class	2.5 MILES WEST OF EMERADO
423	HARVEY_N3___	3	165.000	0.5600	Class	5.6 MILES NORTH OF HARVEY
429	LAKOTA_S1___	1	160.000	0.3800	Class	1.6 MILES SOUTH OF LAKOTA
447	DUNSEITH_E___	281	250.000	0.2700	Class	2.95 MILES EAST OF DUNSEITH

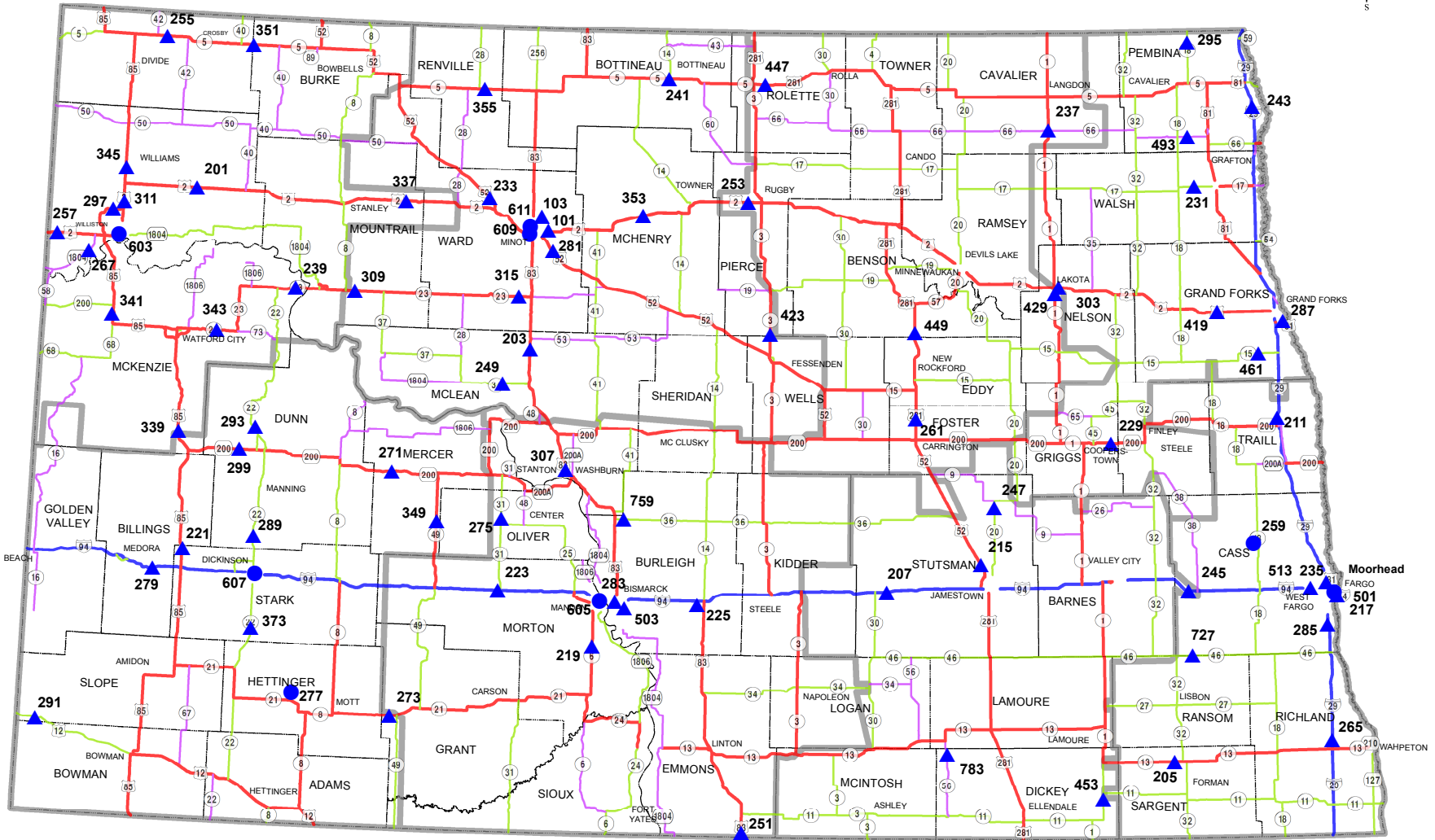
**NORTH DAKOTA DEPARTMENT OF TRANSPORTATION  
ATR LOCATIONS**

<b>STATION</b>	<b>NAME</b>	<b>HIGHWAY</b>	<b>REF POINT</b>	<b>OFF SET</b>	<b>TYPE</b>	<b>LOCATION</b>
<b>RURAL PRINCIPAL ARTERIAL</b>						
449	SHEYENNE_N__	281	141.000	0.4800	Class	2.5 MILES NORTH OF SHEYENNE
<b>RURAL MINOR ARTERIAL</b>						
231	GRAFTON	17	122.000	0.1293	Class	5.5 MILES WEST OF GRAFTON
247	COURTENAY	20	20.000	0.4196	Class	1.8 MILES SOUTH OF ND 9
249	GARRISON	37	54.000	0.9548	Class	1.0 MILES WEST OF GARRISON
275	HANNOVER	31	97.000	0.0758	Class	1.2 MILES NORTH OF HANNOVER
289	MANNING	22	81.000	0.5055	Class	SOUTH OF MANNING
291	MARMARTH	12	4.000	0.8670	Class	1.0 MILE WEST OF MARMARTH
293	KILLDEER	22	112.000	0.1350	Class	5.9 MILES NORTH OF KILLDEER
295	NECHE	18	239.000	0.3300	Class	1.2 MILES SOUTH OF NECHE
373	DICKINSON22S	22	57.000	0.2400	Class	11.4 MILES SOUTH OF DICKINSON
453	OAKES_S1_____	1	13.000	0.3500	Class	3.0 MILES SOUTH OF OAKES
461	THOMPSON_W15	15	129.000	0.0000	Class	3.4 MILES WEST OF THOMPSON
727	ENDERLIN_E46	46	84.000	0.2000	Class	EAST EDGE OF ENDERLIN
759	WILTON_E36__	36	2.000	0.2600	Class	2.3 MILES SE OF WILTON
<b>RURAL MAJOR COLLECTOR-STATE</b>						
267	TRENTON	1804	329.000	0.8846	Class	1.5 MILES NORTHEAST OF TRENTON
493	ST_THOMAS_W_	66	117.000	0.4000	Class	5.7 MILES WEST OF ST. THOMAS
783	KULM_S56_____	56	14.000	0.5800	Class	4.7 MILES SOUTH OF KULM
<b>RURAL MAJOR COLLECTOR-COUNTY</b>						
101	MINOT55ST_NE	5145 C	0.000	0.3000	Class	CMC 5145 - 0.3 MILES NORTH OF US2
103	MINOT46AV_NE	5138 C	8.000	0.2000	Class	CMC 5138 - 2.1 MILES EAST OF US 83
225	STERLING	836 C	14.000	0.2100	Class	CMC 0836 - 1.9 MILES WEST OF US 83
259	AYR				Volume	CMC 0918 - 12.0 MILES EAST OF AYR
277	REGENT				Volume	CMC 2117 - 2.0 MILES NORTH OF ND 21
<b>URBAN PRINCIPAL ARTERIAL</b>						
287	GRAND FORKS	81 B	942.000	0.4092	Class	S. WASHINGTON BETWEEN 24 AND 28 AVE. S.
501	FARGO (U)	81 B	925.000	0.3888	Volume	UNIVERSITY AVE. BET 15 AND 15 1/2 AVE.
503	BISMARCK (U)	810	5.000	0.5750	Class	BIS. EXPWY. SOUTH OF E. MAIN STREET
513	WFARGO_MAIN_ (U)	10 B	933.000	0.4400	Class	MAIN ST. WEST OF 15TH ST NW
603	WILLISTON (U)	2 B	900.000	0.6627	Volume	2ND ST. WEST OF 14TH AVE. WEST
605	MANDAN (U)	94 B	917.043	0.0939	Volume	EAST MAIN ST. WEST OF TWIN CITY DRIVE
<b>URBAN MINOR ARTERIAL</b>						
607	DICKINSON (U)				Volume	9TH ST. EAST BET. 2ND AVE. & 3RD AVE. EAST
611	MINOT (U)				Volume	UNIVERSITY AVE. BET 12TH ST. & 13TH ST. NW.
<b>URBAN COLLECTOR AND LOCAL URBAN</b>						
609	MINOT (U)				Volume	16TH AVE BET. 12TH ST SW. & 17TH AVE. SW.

# Automatic Traffic Recorder (ATR) Locations



(10)



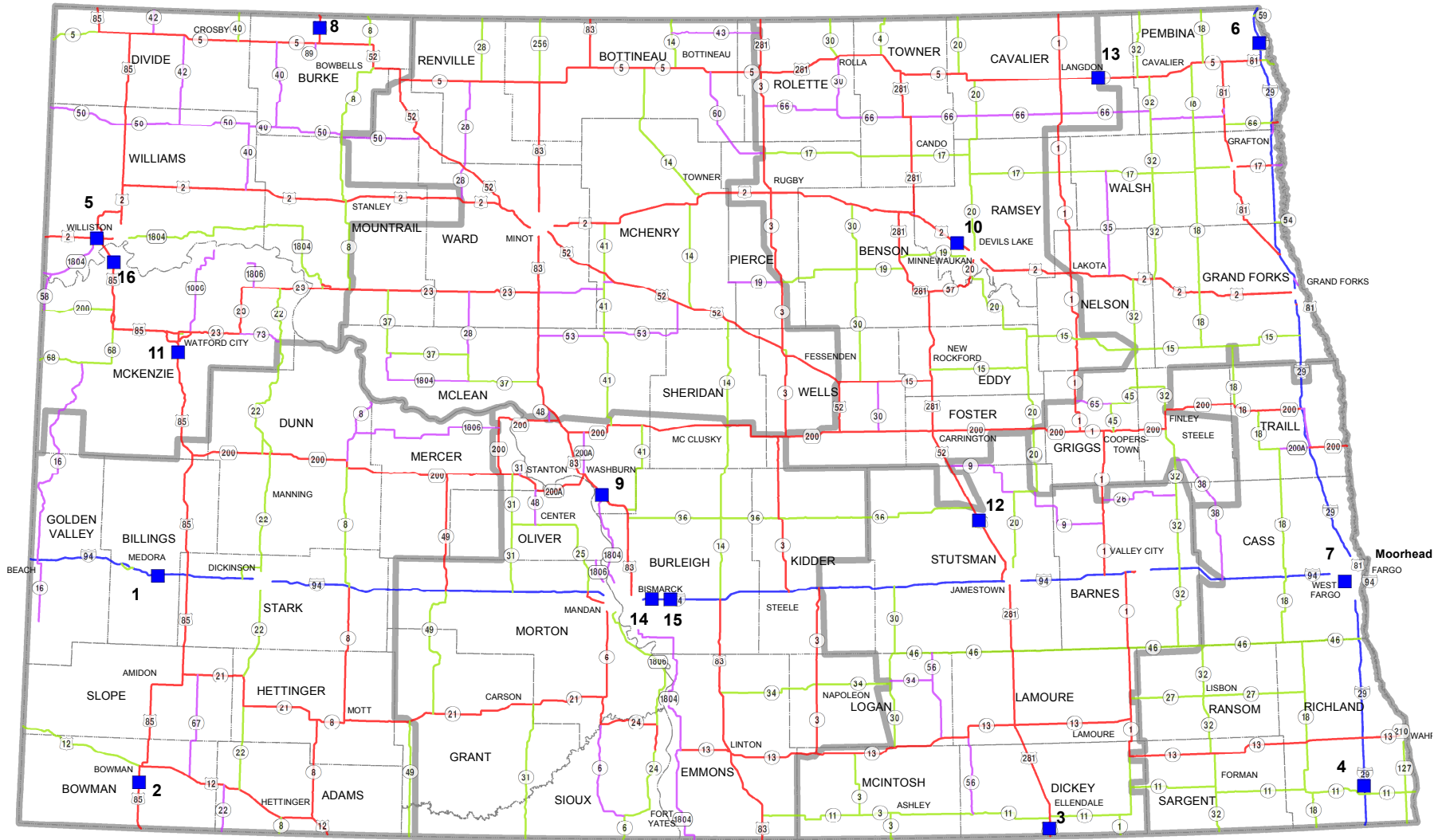
Station Type	Functional Class	Number of ATR Stations
▲ Class	Blue Interstate Rural	8 Rural Interstate
● Volume	Red Principal Arterial Rural	40 Rural Principal Arterial
	Green Minor Arterial Rural	13 Rural Minor Arterial
	Purple Major Collector	8 Rural Major Collector
		3 Urban Interstate
		6 Urban Principal Arterial
		2 Urban Minor Arterial
		1 Urban Collector

Planning & Asset Management Division  
 Traffic Data Section  
 January 2020

File pathway: F:\PLANNING\REIS\shjeflo\Reports\Annual 2017\ArcMap\ATR Locations\_2018.mxd



# Weigh - In - Motion Locations



(11)

## ■ WIM Sites

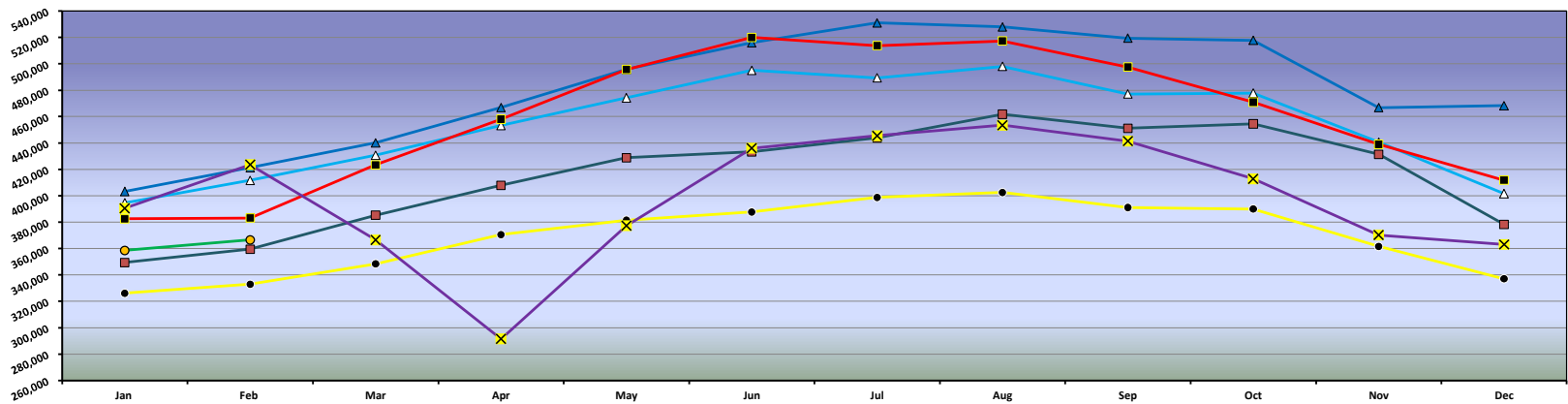
- |               |                |                   |                       |
|---------------|----------------|-------------------|-----------------------|
| 1 - Belfield  | 5 - Williston  | 9 - Washburn      | 13 - Langdon          |
| 2 - Bowman    | 6 - Joliette   | 10 - Devils Lake  | 14 - Apple Creek East |
| 3 - Ellendale | 7 - West Fargo | 11 - Watford City | 15 - Apple Creek West |
| 4 - Wahpeton  | 8 - Portal     | 12 - Jamestown    | 16 - Panger           |

Planning & Asset Management Division  
 Traffic Data Section  
 January 2020

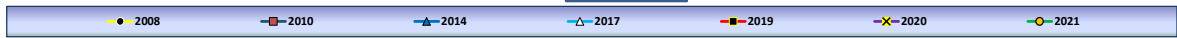
File pathway: F:\PLANNING\NREIS\shjeflo\Reports\Annual 2017\ArcMap\WIM Locations 2017.mxd

Average Daily Traffic  
All ATR's

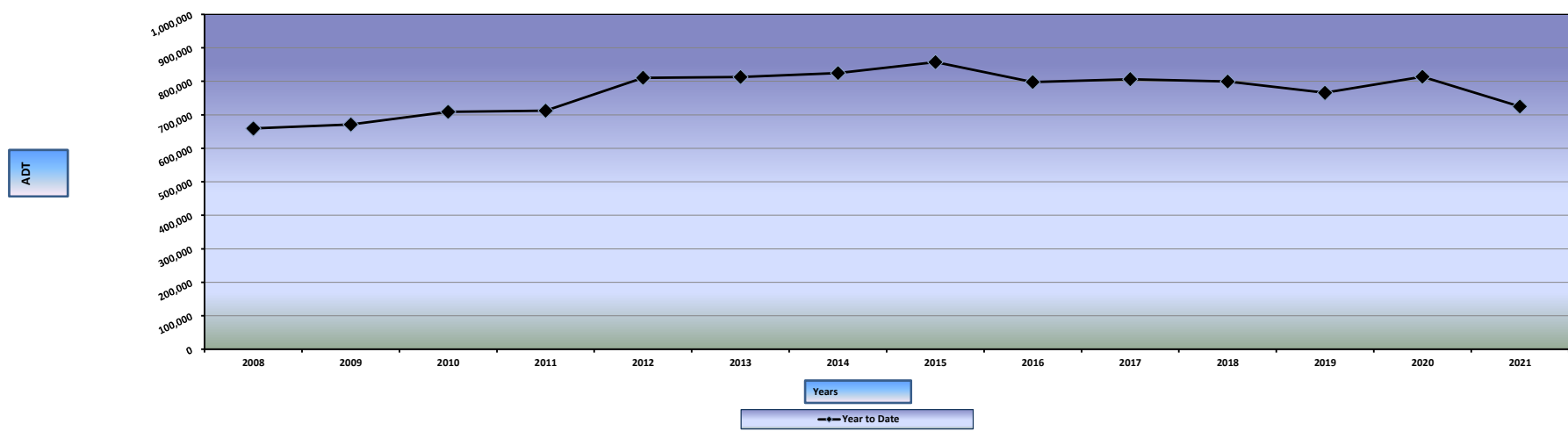
ADT



Years



Average Daily Traffic All ATR's Year to Date (January-February)















































STATE OF NORTH DAKOTA  
AUTOMATIC TRAFFIC RECORDER DATA BY MONTH  
AVERAGE DAILY TRAFFIC AND PERCENT CHANGE BY STATION

DIRECTION	YEAR	JAN	FEB	MAR	APR	MAY	JUN	JUL	AUG	SEP	OCT	NOV	DEC	ANNUAL
-----------	------	-----	-----	-----	-----	-----	-----	-----	-----	-----	-----	-----	-----	--------

URBAN MINOR ARTERIAL

**STATION: 607 - DICKINSON (U)**

**LOCATION: 9TH ST. EAST BET. 2ND AVE. & 3RD AVE. EAST**

EAST	2021	1359	1376											
	2020	1415	1457	1189	983	1233	1429	1401	1381	1461	1421	1276	1285	1328
	% CHG MO.	-4.0%	-5.6%											
	% CHG YR.	-4.0%	-4.8%											
WEST	2021	1386	1410											
	2020	1431	1476	1229	1003	1316	1496	1466	1466	1548	1491	1327	1325	1381
	% CHG MO.	-3.1%	-4.5%											
	% CHG YR.	-3.1%	-3.8%											
EAST & WEST	2021	2745	2786											
	2020	2846	2933	2418	1986	2549	2925	2867	2847	3009	2912	2603	2610	2709
	% CHG MO.	-3.5%	-5.0%											
	% CHG YR.	-3.5%	-4.3%											

**STATION: 611 - MINOT (U)**

**LOCATION: UNIVERSITY AVE. BET 12TH ST. & 13TH ST. NW.**

EAST	2021	901	925											
	2020	1036	1138	927	699	887	938	1046	1010	1080	1139	871	839	968
	% CHG MO.	-13.0%	-18.7%											
	% CHG YR.	-13.0%	-16.0%											
WEST	2021	964	984											
	2020	1108	1204	1009	789	1007	1089	1252	1154	1187	1307	936	907	1079
	% CHG MO.	-13.0%	-18.3%											
	% CHG YR.	-13.0%	-15.7%											
EAST & WEST	2021	1865	1909											
	2020	2144	2342	1936	1488	1894	2027	2298	2164	2267	2446	1807	1746	2047
	% CHG MO.	-13.0%	-18.5%											
	% CHG YR.	-13.0%	-15.9%											

URBAN COLLECTOR & LOCAL URBAN

**STATION: 609 - MINOT (U)**

**LOCATION: 16TH AVE BET. 12TH ST SW. & 17TH AVE. SW.**

EAST	2021	1110	1100											
	2020	1154	1224	1047	895	1253	1345	1307	1325	1281	1256 *	1084	1183	1196
	% CHG MO.	-3.8%	-10.1%											
	% CHG YR.	-3.8%	-7.1%											
WEST	2021	1067	1072											
	2020	1094	1159	970	830	1288	1290	1285	1266	1238	1193 *	1064	1164	1153
	% CHG MO.	-2.5%	-7.5%											
	% CHG YR.	-2.5%	-5.1%											
EAST & WEST	2021	2177	2172											
	2020	2248	2383	2017	1725	2541	2635	2592	2591	2519	2449	2148	2347	2350
	% CHG MO.	-3.2%	-8.9%											
	% CHG YR.	-3.2%	-6.1%											

**CON** STATION DOWN DUE TO CONSTRUCTION  
**REP** STATION DOWN DUE TO REPAIRS  
**NEW** NEW STATION, NO PRIOR DATA  
**\*** TRAFFIC ESTIMATED DUE TO INSUFFICIENT DATA



PART 2

# TRUCK TRAFFIC

**NORTH DAKOTA DEPARTMENT OF TRANSPORTATION  
ATR CLASS LOCATIONS**

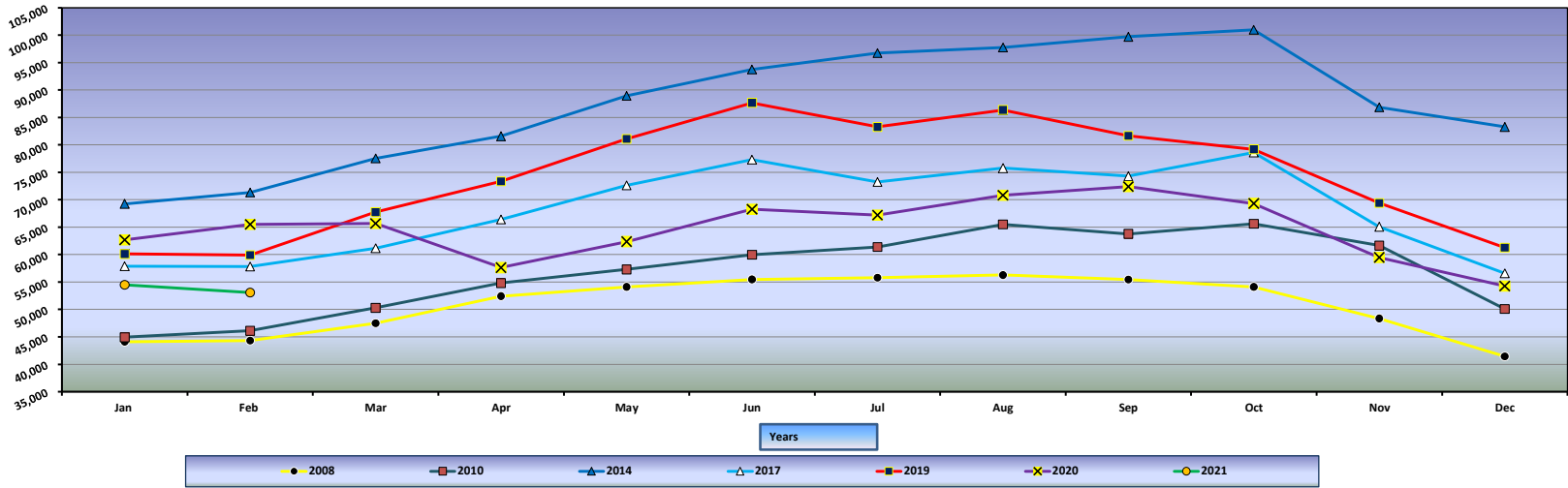
<b>STATION</b>	<b>NAME</b>	<b>HIGHWAY</b>	<b>REF POINT</b>	<b>OFF SET</b>	<b>TYPE</b>	<b>LOCATION</b>
<b>URBAN INTERSTATE 94</b>						
217	FARGO (U)	94	352.000	0.3327	Class	RED RIVER BRIDGE
283	BISMARCK (U)	94	158.000	0.8538	Class	0.4 MILES WEST OF US 83 INT.
<b>RURAL INTERSTATE 94</b>						
207	MEDINA	94	231.000	0.2923	Class	0.9 MILES EAST OF MEDINA
223	NEW SALEM	94	126.000	0.8803	Class	0.8 MILES WEST OF ND 31 INT.
245	TOWER CITY	94	312.000	0.5100	Class	2.3 MILES WEST OF BUFFALO INT.
279	PAINTED CANYON	94	34.000	0.6637	Class	7.8 MILES WEST OF US 85 INT.
<b>URBAN INTERSTATE 29</b>						
235	FARGO (U)	29	66.255	0.5725	Class	NORTH OF 12TH AVE.
<b>RURAL INTERSTATE 29</b>						
211	BUXTON	29	112.000	0.8614	Class	4.0 MILES NORTH OF MAYVILLE INT.
243	BOWESMONT	29	196.014	0.5726	Class	0.5 MILES NORTH OF BOWESMONT
265	MOORETON	29	25.000	0.0149	Class	2.5 MILES NORTH OF ND 13
285	DAVENPORT	29	55.000	0.4798	Class	1.3 MILES NORTH OF DAVENPORT INT
<b>RURAL PRINCIPAL ARTERIAL</b>						
201	RAY	2	51.000	0.2986	Class	2.1 MILES WEST OF RAY
203	MAX	83	168.000	0.9400	Class	3.3 MILES SOUTH OF ND 53
205	GWINNER	13	337.000	0.2241	Class	2.1 MILES WEST OF ND 32
215	JAMESTOWN	52	259.000	0.5408	Class	2.5 MILES NORTH OF JAMESTOWN
219	MANDAN	6	55.000	0.8718	Class	11.0 MILES SOUTH OF MANDAN
221	FAIRFIELD	85	80.000	0.8850	Class	5.1 MILES NORTH OF I-94
229	COOPERSTOWN	200	345.000	0.2602	Class	4.0 MILES EAST OF COOPERSTOWN
233	FOXHOLM	52	78.000	0.2600	Class	1.5 MILES SOUTHEAST OF FOXHOLM
237	NEKOMA	1	205.000	0.2195	Class	8.5 MILES SOUTH LANGDON
239	NEW TOWN	23	42.000	0.8986	Class	4.7 MILES EAST OF ND 22
241	BOTTINEAU	5	173.000	0.9523	Class	0.2 MILES WEST OF ND 14
251	HAGUE	83	1.000	0.1144	Class	1.1 MILES NORTH OF SOUTH DAKOTA LINE
253	RUGBY	2	207.000	0.3265	Class	3.5 MILES WEST OF ND 3
255	CROSBY	5	28.000	0.7521	Class	6.0 MILES WEST OF CROSBY
257	WILLISTON	2	2.000	0.3979	Class	2.4 MILES EAST OF MONTANA LINE
261	CARRINGTON	281	117.000	0.9013	Class	5.5 MILES NORTH OF JUNCTION WITH HWY 200
271	GOLDEN VALLEY	200	131.000	0.0000	Class	0.7 MILES EAST OF GOLDEN VALLEY
273	NEW LEIPZIG	21	67.000	0.5500	Class	2.1 MILES WEST OF ND 49
281	SAWYER	52	102.000	0.7136	Class	WEST OF SAWYER
297	WILLISTON_NW	85	193.000	0.7000	Class	NW WILLISTON TRUCK RELIEVER ROUTE
299	KILLDEER200W	200	88.000	0.5200	Class	6.7 MILES WEST OF JCT. ND 22 AND ND 200
303	MICHIGAN	2	296.000	0.6500	Class	4.0 MILES EAST OF ND 1
307	WASHBURN	83	130.000	0.7300	Class	NORTH OF WASHBURN
309	NEWTOWN_EAST	23	58.000	0.7000	Class	8.4 MILES EAST OF NEW TOWN
311	WILLISTON_2N	2	27.000	0.6300	Class	5.2 MILES NORTH OF WILLISTON
315	RYDER_E23__	23	102.000	0.2000	Class	3.3 MILES WEST OF THE JUNCTION WITH US 83
337	BLAISDELL_E2	2	107.000	0.1000	Class	1.0 MILES EAST OF BLAISDELL
339	GRASSY_BUTTE	85	113.000	0.8500	Class	1.3 MILES NORTH OF GRASSY BUTTE
341	ALEXANDER85W	85	162.000	0.2080	Class	1/2 MILE W OF ALEXANDER
343	WATFORD_E23_	23	10.000	0.7000	Class	9.1 MILES EAST OF WATFORD CITY
345	WILLIAMS_N85	85	205.000	0.4800	Class	15.4 MILES NORTH OF WILLISTON
349	BEULAH_S49__	49	91.000	0.7700	Class	10.5 MILES SOUTH OF BEULAH
351	COLUMBUS_W5	5	52.000	0.2000	Class	3.2 MILES EAST OF NOONAN
353	GRANVILLE_E2	2	177.000	0.7600	Class	8.3 MILES EAST OF GRANVILLE
355	MOHALL_W5__	5	121.000	0.9700	Class	3.6 MILES WEST OF MOHALL
419	EMERADO_W2	2	340.000	0.5000	Class	2.5 MILES WEST OF EMERADO
423	HARVEY_N3__	3	165.000	0.5600	Class	5.6 MILES NORTH OF HARVEY
429	LAKOTA_S1__	1	160.000	0.3800	Class	1.6 MILES SOUTH OF LAKOTA
447	DUNSEITH_E__	281	250.000	0.2700	Class	2.95 MILES EAST OF DUNSEITH

**NORTH DAKOTA DEPARTMENT OF TRANSPORTATION  
ATR CLASS LOCATIONS**

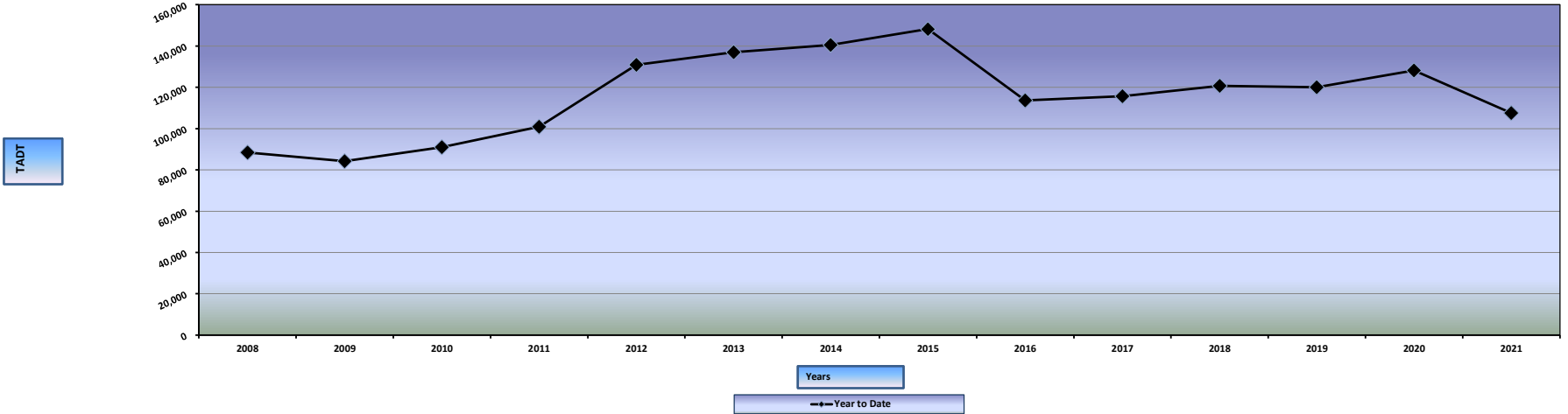
<b>STATION</b>	<b>NAME</b>	<b>HIGHWAY</b>	<b>REF POINT</b>	<b>OFF SET</b>	<b>TYPE</b>	<b>LOCATION</b>
<b>RURAL PRINCIPAL ARTERIAL</b>						
449	SHEYENNE_N__	281	141.000	0.4800	Class	2.5 MILES NORTH OF SHEYENNE
<b>RURAL MINOR ARTERIAL</b>						
231	GRAFTON	17	122.000	0.1293	Class	5.5 MILES WEST OF GRAFTON
247	COURTENAY	20	20.000	0.4196	Class	1.8 MILES SOUTH OF ND 9
249	GARRISON	37	54.000	0.9548	Class	1.0 MILES WEST OF GARRISON
275	HANNOVER	31	97.000	0.0758	Class	1.2 MILES NORTH OF HANNOVER
289	MANNING	22	81.000	0.5055	Class	SOUTH OF MANNING
291	MARMARTH	12	4.000	0.8670	Class	1.0 MILE WEST OF MARMARTH
293	KILLDEER	22	112.000	0.1350	Class	5.9 MILES NORTH OF KILLDEER
295	NECHE	18	239.000	0.3300	Class	1.2 MILES SOUTH OF NECHE
373	DICKINSON22S	22	57.000	0.2400	Class	11.4 MILES SOUTH OF DICKINSON
453	OAKES_S1____	1	13.000	0.3500	Class	3.0 MILES SOUTH OF OAKES
461	THOMPSON_W15	15	129.000	0.0000	Class	3.4 MILES WEST OF THOMPSON
727	ENDERLIN_E46	46	84.000	0.2000	Class	EAST EDGE OF ENDERLIN
759	WILTON_E36__	36	2.000	0.2600	Class	2.3 MILES SE OF WILTON
<b>RURAL MAJOR COLLECTOR-STATE</b>						
267	TRENTON	1804	329.000	0.8846	Class	1.5 MILES NORTHEAST OF TRENTON
493	ST_THOMAS_W_	66	117.000	0.4000	Class	5.7 MILES WEST OF ST. THOMAS
783	KULM_S56____	56	14.000	0.5800	Class	4.7 MILES SOUTH OF KULM
<b>RURAL MAJOR COLLECTOR-COUNTY</b>						
101	MINOT55ST_NE	5145 C	0.000	0.3000	Class	CMC 5145 - 0.3 MILES NORTH OF US2
103	MINOT46AV_NE	5138 C	8.000	0.2000	Class	CMC 5138 - 2.1 MILES EAST OF US 83
225	STERLING	836 C	14.000	0.2100	Class	CMC 0836 - 1.9 MILES WEST OF US 83
<b>URBAN PRINCIPAL ARTERIAL</b>						
287	GRAND FORKS	81 B	942.000	0.4092	Class	S. WASHINGTON BETWEEN 24 AND 28 AVE. S.
503	BISMARCK (U)	810	5.000	0.5750	Class	BIS. EXPWY. SOUTH OF E. MAIN STREET
513	WFARGO_MAIN_ (U)	10 B	933.000	0.4400	Class	MAIN ST. WEST OF 15TH ST NW

Average Daily Truck Traffic  
All ATR's

TADT



Average Daily Truck Traffic All ATR's Year to Date (January-February)











































STATE OF NORTH DAKOTA  
 AUTOMATIC TRAFFIC RECORDER DATA BY MONTH  
 TRUCK AVERAGE DAILY TRAFFIC AND PERCENT CHANGE BY STATION

DIRECTION	YEAR	JAN	FEB	MAR	APR	MAY	JUN	JUL	AUG	SEP	OCT	NOV	DEC	ANNUAL
-----------	------	-----	-----	-----	-----	-----	-----	-----	-----	-----	-----	-----	-----	--------

URBAN PRINCIPAL ARTERIAL

**STATION: 513 - WFARGO\_MAIN\_ (U)**

**LOCATION: HIGHWAY 10B - MAIN ST. WEST OF 15TH ST NW**

EAST &	2021	928	946											
WEST	2020	959	935	929	957	1072	1183	1205	1277	1385	1212	993	939	1087
	% CHG MO.	-3.2%	1.2%											
	% CHG YR.	-3.2%	-1.1%											

- CON** STATION DOWN DUE TO CONSTRUCTION
- REP** STATION DOWN DUE TO REPAIRS
- NEW** NEW STATION, NO PRIOR DATA
- \*** TRAFFIC ESTIMATED DUE TO INSUFFICIENT DATA